



velda

# POND catalog

Velda · Vincia · Sanikoi · VT

2022



# Pond products in this catalog and online

Within the range you will find these product groups

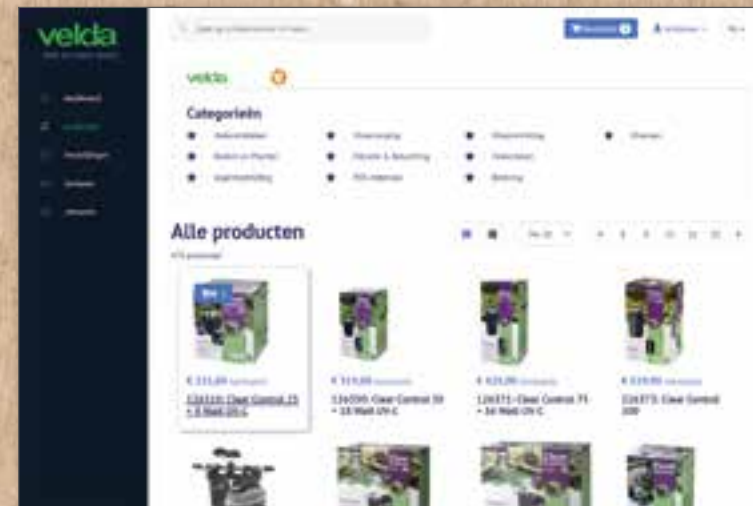


Besides Velda products you will find our special brands



## Order online portal.velda.com

### 1 Choose from the overview of **all products**



### 2 View **article information**, **price** and **stock**



### 3 Add items to the **order list**...



...and place your order!

Innovation is what Velda is well known for. Not only in the range of pond products, but also in the provision of information and order processing.

Innovation can already be seen in this catalogue, but we are proud to introduce the online product portal with ordering function.

Log in to the Velda portal and you will be on your own online site. Here you will find detailed information about all pond products.

1 Download images, videos and POS material.

2 View the current stock position and your purchase price.

3 Simply place an order and view the order history.

4 Download your invoices.

5 The warranty claim for defective items can be submitted.

Go to <https://portal.velda.com> and discover the options within your own account.





# Take a sustainable step for the pond and the future

Nature rules in garden ponds. Natural processes provide a biological balance in the water biotope. However, sometimes it helps to give plants and micro-organisms in the pond a helping hand. The Vincia natural products keep your pond free of algae and improve water quality naturally. They are 100% environment friendly and biodegradable. Vincia is for pondlovers who prefer not to use artificial products but who do want to enjoy the life around clear water.



1	Product name	Product description	Art.nr.
	<b>Toru-Active</b>	<i>natural pH reduction on the basis of peat</i>	142130



2	Product name	Product description	Art.nr.
	<b>Toru-Stroh</b>	<i>natural product for ponds, barley straw and high moor peat</i>	143216



3	Product name	Product description	Art.nr.
	<b>Strobinol</b>	<i>natural product for ponds, barley straw in pellet form</i>	143210



# Natural function



1	Product name	Product description	Art.nr.
	<b>Maërl</b>	<i>natural product for clear water and</i>	
	700 g	for 20.000 litres of water <i>a healthy pond</i>	142105
	<b>Maërl</b>	<i>natural product for clear water and</i>	
	1800 g	for 50.000 litres of water <i>a healthy pond</i>	142111
	<b>Maërl</b>	<i>natural product for clear water and</i>	
	3300 g	for 100.000 litres of water <i>a healthy pond</i>	142115



2	Product name	Product description	Art.nr.
	<b>Maërl Crystal</b>	<i>natural product for clear water and</i>	
	1500 g	for 20.000 litres of water <i>a healthy pond</i>	142117
	<b>Maërl Crystal</b>	<i>natural product for clear water and</i>	
	3600 g	for 50.000 litres of water <i>a healthy pond</i>	142119



3	Product name	Product description	Art.nr.
	<b>Sludge Cleaner</b>	<i>removes biologically pond</i>	
	1700 g	for 10 m <sup>2</sup> <i>bottom sludge</i>	142323
	<b>Sludge Cleaner</b>	<i>removes biologically pond</i>	
	4250 g	for 25 m <sup>2</sup> <i>bottom sludge</i>	142325



4	Product name	Product description	Art.nr.
	<b>Pond Cleaner</b>	<i>natural product for ponds</i>	
	1000 g	for 20.000 litres of water <i>against algae</i>	142320

1	Product name	Product description	Art.nr.
	<b>Vincia 100% natural</b>	<i>natural products for a</i>	
	combi display	<i>healthy and algae-free pond</i>	142327



- Includes:
- 10x Vincia Strobinal
  - 6x Vincia Toru-Active
  - 8x Vincia Toru-Stroh
  - 6x Vincia Maërl 700g
  - 6x Vincia Maërl Crystal 1500g
  - 4x Vincia Pond Cleaner 1000g
  - 4x Vincia Sludge Cleaner 1700g
  - 4x Vincia Maërl Crystal 3600g
  - 4x Vincia Sludge Cleaner 4250g



# Bottom material for a perfect base

A garden pond is a small artificial water biotope in which natural processes can easily be disturbed. Starting with substrate on the pond bottom is essential for clear water. The water-purifying bacteria bond to this porous material and start ‘cleaning’ the pond biologically. The CO2 and phosphate released during this process are important nutrients for the pond plants. Adding extra bacteria immediately stimulates this process. In existing ponds, it is never too late to add pond substrate in combination with a dose of Bacterial. This puts down the basic conditions needed to guarantee clear water. The plants will grow well and the fish will stay healthy.



1	Product name	Product description	Art.nr.
	<b>Lelite</b> 10 litres	water lily soil fortified with blue loam	123130
	<b>Lelite</b> 10 litres    display (68)	water lily soil fortified with blue loam	123132
	<b>Lelite</b> 20 litres	water lily soil fortified with blue loam	123134



5	Product name	Product description	Art.nr.
	<b>Classic Substrate</b> 10 kg / 10 l	biological nutrient medium for ponds	123030
	<b>Classic Substrate</b> 20 kg / 20 l	biological nutrient medium for ponds	123032
	<b>Classic Substrate</b> 30 kg / 40 l	biological nutrient medium for ponds	123034



2	Product name	Product description	Art.nr.
	<b>Plant Soil</b> 10 litres	universal nutritive soil for all pond plants	123110
	<b>Plant Soil</b> 10 litres    display (68)	universal nutritive soil for all pond plants	123112
	<b>Plant Soil</b> 20 litres	universal nutritive soil for all pond plants	123150
	<b>Plant Soil</b> 40 litres	universal nutritive soil for all pond plants	123152



6	Product name	Product description	Art.nr.
	<b>Pond Gravel 4/6 mm</b> 2 litres	cover material for pond soil and plant baskets	123205
	<b>Pond Gravel 4/6 mm</b> 8 litres	cover material for pond soil and plant baskets	123215
	<b>Pond Gravel 4/6 mm</b> 15 litres	cover material for pond soil and plant baskets	123225
	<b>Pond Gravel 8/12 mm</b> 8 litres	cover material for pond soil and plant baskets	123260
	<b>Pond Gravel 8/12 mm</b> 15 litres	cover material for pond soil and plant baskets	123270



3	Product name	Product description	Art.nr.
	<b>Superdensa</b> 7 kg / 10 l	growing substrate for oxygen plants	123140
	<b>Superdensa</b> 7 kg / 10 l    display (50)	growing substrate for oxygen plants	123142



7	Product name	Product description	Art.nr.
	<b>Pond Substrate white</b> 20 litres	biological nutrient medium for ponds	123053



4	Product name	Product description	Art.nr.
	<b>Plant Substrate</b> 10 litres	growing substrate for all pond plants	123144
	<b>Plant Substrate</b> 10 litres    display (50)	growing substrate for all pond plants	123145



8	Product name	Product description	Art.nr.
	<b>Mini-Pond Substrate</b> 5 litres	pond substrate for mini ponds	123020
	<b>Mini-Pond Substrate</b> 5 litres    display (80)	pond substrate for mini ponds	123021



# Plant care for a pond full of life

Many gardeners like to include pond plants in their overall garden plan. Beautiful water lilies, marsh plants and oxygen plants create a genuine pond feeling in the garden. In order to get a healthy pond environment with clear water, at least half the pond surface should be covered with plants. And with the help of pond filtration and plant care from Velda, a beautiful plant pond is within reach.

## Planting for years of pond enjoyment

Pond plants release oxygen and remove harmful substances from the water. The fast-growing oxygen plants in particular keep the water clear and free of algae. Marsh and bank plants give the pond that finishing touch. Choose the species carefully and create beautiful groups with varied colours, heights and leaf shapes. A beautiful water lily with lots of flowers will ultimately be the crowning glory in your plant pond. Even without fish, the pond feeling will be complete.



1	Product name	Product description	Art.nr.
	<b>Plant Basket</b>	plant basket for pond plants	
	18 x 18 x 18 cm	50 pieces in display	127550
	<b>Plant Basket</b>	plant basket for pond plants	
	25 x 25 x 20 cm	50 pieces in display	127552
	<b>Plant Basket</b>	plant basket for pond plants	
	30 x 30 x 25 cm	50 pieces in display	127554
	<b>Plant Basket</b>	plant basket for pond plants	
	Ø 15 x 15 cm	50 pieces in display	127560
	<b>Plant Basket</b>	plant basket for pond plants	
	Ø 25 x 20 cm	50 pieces in display	127562
2	Product name	Product description	Art.nr.
	<b>Plant Sock</b>	large plant basket for several plants	
	Ø 10 x 80 cm	35 pieces in display	127594
	<b>Plant Sock</b>	large plant basket for several plants	
	Ø 15 x 80 cm	35 pieces in display	127595
3	Product name	Product description	Art.nr.
	<b>Cloth Liner</b>	inlay cloths for	
	45 x 45 cm	100 pieces in display coarse plant baskets	127580
	<b>Cloth Liner</b>	inlay cloths for	
	60 x 60 cm	60 pieces in display coarse plant baskets	127582
	<b>Cloth Liner</b>	inlay cloths for	
	90 x 90 cm	30 pieces in display coarse plant baskets	127583



4	Product name	Product description	Art.nr.
	<b>Floating Plant Island</b>	floating and linkable	
	25 x 25 cm	planting basket	127577
	<b>Floating Plant Island</b>	floating and linkable	
	35 x 35 cm	planting basket	127579
	<b>Floating Plant Island</b>	floating and linkable	
	Ø 25 cm	planting basket	127572
	<b>Floating Plant Island</b>	floating and linkable	
	Ø 35 cm	planting basket	127573
	<b>Floating Plant Island</b>	36 x 25 cm + 36 x Ø 25 cm	
	display (102)	+ 15 x 35 cm + 15 x Ø 35 cm	127598
5	Product name	Product description	Art.nr.
	<b>Floating Plant Oasis</b>	floating plant support	
	30 x 40 cm	for 6 P9 plants	127603
6	Product name	Product description	Art.nr.
	<b>Overgrowing Mat</b>	for a grown over water side	
	110 x 105 cm		127590
7	Product name	Product description	Art.nr.
	<b>Peat Blocks</b>	for natural pond sides, borders	
	6 pieces	and different ornamental purposes	122323
8	Product name	Product description	Art.nr.
	<b>Water Lily Basket</b>	large pond plant basket	
	Ø 40 cm	for planting water lilies	141009
9	Product name	Product description	Art.nr.
	<b>Plant Basket Plastic</b>	for planting all kinds	
	Ø 13 cm	of pond plants	141000
	<b>Plant Basket Plastic</b>	for planting all kinds	
	Ø 22 cm	of pond plants	141001
	<b>Plant Basket Plastic</b>	for planting all kinds	
	11 x 11 cm	of pond plants	141002
	<b>Plant Basket Plastic</b>	for planting all kinds	
	19 x 19 cm	of pond plants	141003
	<b>Plant Basket Plastic</b>	for planting all kinds	
	23 x 23 cm	of pond plants	141004
	<b>Plant Basket Plastic</b>	for planting all kinds	
	28 x 28 cm	of pond plants	141005
	<b>Plant Basket Plastic</b>	for planting all kinds	
	35 x 35 cm	of pond plants	141006
	<b>Plant Basket Plastic</b>	for planting all kinds	
	oval	of pond plants	141007
	<b>Plant Basket Plastic</b>	70 + 85 + 75 + 115	
	display (670)	+ 115 + 80 + 70 + 60	141008





Flyer

Provides pond owners information about the bacteria in Bacterial.



Bacterial for ponds  
a well-known name since 1982

The pond is a closed ecosystem. Biological waste is converted by bacteria into nutrients for water plants, which in turn release oxygen into the water for a healthy pond. But if the biological balance is disturbed, algae can start to grow. That is bad for the water plants. Pond substrate on the bed with a dose of (liquid) Bacterial restores the biological balance of the pond quickly.

Create the ideal conditions

Realise that the water purifying bacteria always need a bonding material. The bottom substrate in the pond is the ideal combination with Bacterial. The bacteria develop optimally in oxygen-rich water. Aeration of the water brings oxygen into the pond and stimulates bacterial development.

Biological balance in the pond

Every packet of Bacterial contains billions of nitrifying bacteria. They come to life in contact with water. This has a positive effect on the pond in every season. Advise a new dose of Bacterial four times a year (> 10°C).

Plant fertilizer

1	Product name	Product description	Art.nr.
	CO2 Tabs	CO2 tablets for oxygen plants	122475
2	Product name	Product description	Art.nr.
	Ferro Plus	iron fertilization for pond plants	122450
3	Product name	Product description	Art.nr.
	Super Growth Balls XL	for local fertilization of pond plants	122256
4	Product name	Product description	Art.nr.
	Growth Balls	for local fertilization of pond plants	122250
	Growth Balls	for local fertilization of pond plants	122255



1	Product name	Product description	Art.nr.
	Bacterial	accelerates the creation of a biological balance	122615
	Bacterial	accelerates the creation of a biological balance	122631
	Bacterial	accelerates the creation of a biological balance	122635
	Bacterial	accelerates the creation of a biological balance	122636
2	Product name	Product description	Art.nr.
	Bacterial Filterstart	for the starting up of biological filters	122605
	Bacterial Filterstart	for the starting up of biological filters	122610
3	Product name	Product description	Art.nr.
	Bacterial Liquid	liquid bacteria for biological purification of ponds	122637
	Bacterial Liquid	liquid bacteria for biological purification of ponds	122622
	Bacterial Liquid	liquid bacteria for biological purification of ponds	122638
	Bacterial Liquid	liquid bacteria for biological purification of ponds	122660





1	Product name	Product description	Art.nr.
	<b>Aqua Test Strips</b>	test strips to measure quickly	
	50 pieces	pH, GH, KH, NO <sub>2</sub> , NO <sub>3</sub> , Cl <sub>2</sub> the water values	121519
	<b>Aqua Test Strips</b>	test strips to measure quickly	
	display (36)	the water values	121520



2	Product name	Product description	Art.nr.
	<b>Aqua Test Set pH-GH-KH</b>	measures pH, GH and KH	121556



3	Product name	Product description	Art.nr.
	<b>AquaTesterPro</b>	electronic water analyser	
	+ Indicators fresh water	pH, GH, KH, TA, NO <sub>2</sub> , NO <sub>3</sub> , Cl <sub>2</sub> , CO <sub>2</sub>	121560

4	Product name	Product description	Art.nr.
	<b>Indicators</b>	pH, GH, KH, TA, NO <sub>2</sub> , NO <sub>3</sub> , Cl <sub>2</sub> and CO <sub>2</sub>	
	25 pieces for fresh water	testing of ponds and aquaria	121565



# Water testing prevents pond problems

Pond owners find testing methods complicated and they often have doubts about the results. So they often skip regular checking on water values. Velda makes things easy with the AquaTesterPro.

**Flyer**  
Provides pond owners information about water testing with the app.



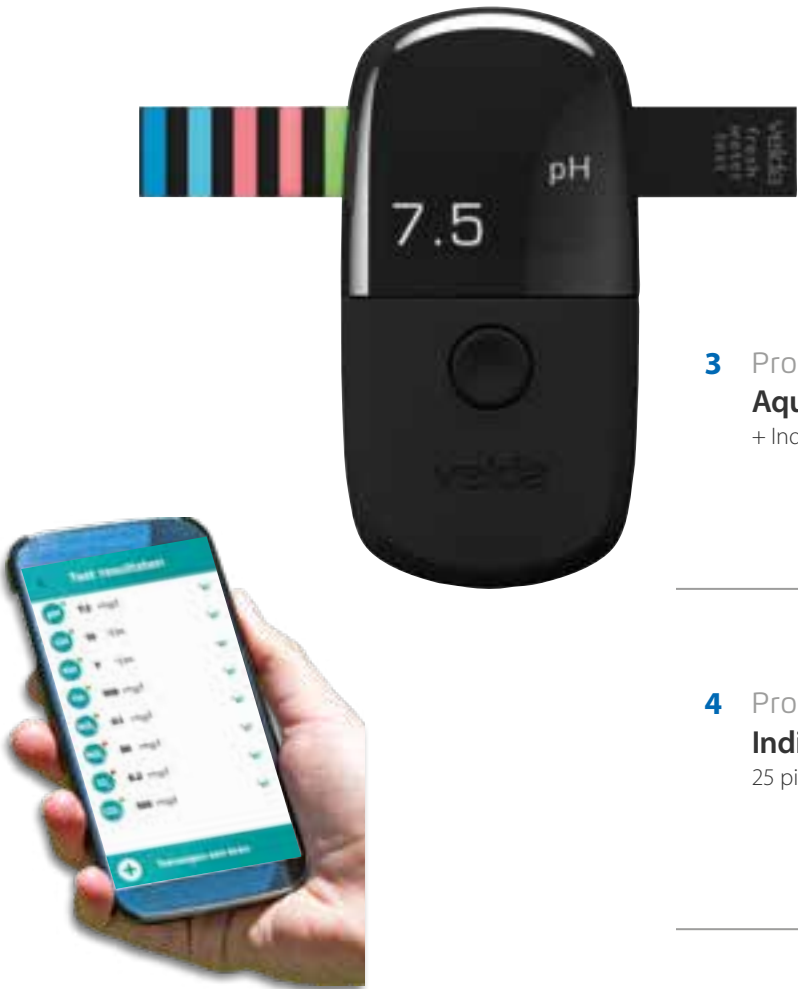
You should always advise testing the water before using anti-algal products or fish medication in the pond. These products have a much stronger effect in soft pond water and you should advise customers to regulate water hardness first with GH Plus and KH Plus. The AquaTesterPro with special indicators measures the most important water values in just a few seconds.

## Extremely fast and very accurate

Using this electronic water analyser you can check the water quality often and easily. The digital test results are very accurate and via bluetooth they can be sent to smartphone or tablet. The special test app uses the values for a complete diagnosis and history of every pond. You will receive smart advice from Velda to maintain water quality and avoid any pond problems.



Download the app



Order now: [portal.velda.com](https://portal.velda.com)





# Water treatment makes ponds healthy

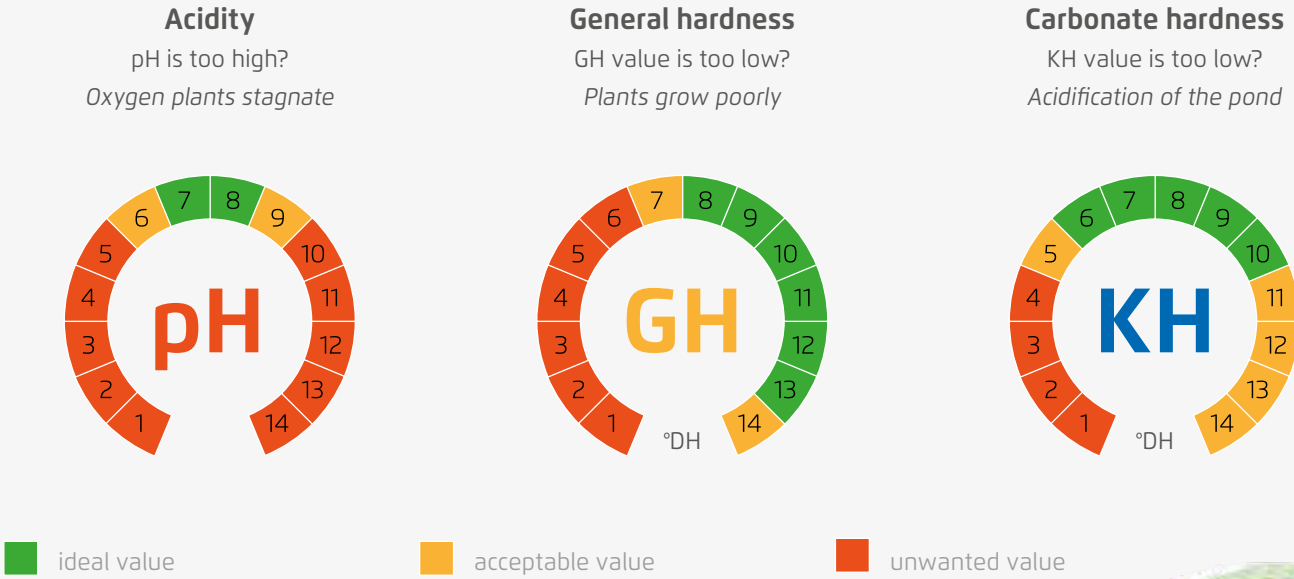


1	Product name	Product description	Art.nr.
	<b>Duo GH/KH Plus</b>	increases the GH and CH values	142060

2	Product name	Product description	Art.nr.
	<b>Natru-Sal</b>	pond salt activates the mucous layer of fish	142251
	<b>Natru-Sal</b>	pond salt activates the mucous layer of fish	142254

3	Product name	Product description	Art.nr.
	<b>Mineral Plus</b>	improves the hardness and quality of the water	122105
	<b>Mineral Plus</b>	improves the hardness and quality of the water	122110

4	Product name	Product description	Art.nr.
	<b>Bio-Oxydator</b>	removes biologically pond bottom sludge	122148
	<b>Bio-Oxydator</b>	removes biologically pond bottom sludge	122150
	<b>Bio-Oxydator</b>	removes biologically pond bottom sludge	122156



5	Product name	Product description	Art.nr.
	<b>pH Min</b>	decreases the pH-value of the water quickly by 3 °pH	120233
	<b>pH Min</b>	decreases the pH-value of the water quickly by 3 °pH	120234



6	Product name	Product description	Art.nr.
	<b>GH Plus</b>	increases the total hardness quickly by 3 °DH	121952
	<b>GH Plus</b>	increases the total hardness quickly by 3 °DH	121953
	<b>GH Plus</b>	increases the total hardness, in useful bucket	142033
	<b>GH Plus</b>	increases the total hardness, in useful bucket	142034
	<b>GH Plus</b>	increases the total hardness, in useful bucket	142035



7	Product name	Product description	Art.nr.
	<b>KH Plus</b>	increases the carbonate hardness quickly by 3 °DH	122032
	<b>KH Plus</b>	increases the carbonate hardness quickly by 3 °DH	122033
	<b>KH Plus</b>	increases the carbonate hardness, in useful bucket	142078
	<b>KH Plus</b>	increases the carbonate hardness, in useful bucket	142079
	<b>KH Plus</b>	increases the carbonate hardness, in useful bucket	142080





# Algae control

## remove and prevent



1	Product name	Product description	Art.nr.
	<b>T-Flow Tronic 15</b>	electronic fibrous and slime up to 15.000 litres of water	algae remover 126656
	<b>T-Flow Tronic 75</b>	electronic fibrous and slime up to 75.000 litres of water	algae remover 126666
	<b>Anode</b>	for IT-05 / T-Flow 05	replaceable anode 126685
	<b>Anode</b>	for IT-15 / T-Flow 15	replaceable anode 126690
	<b>Anode</b>	for IT-35 / T-Flow 35	replaceable anode 126695
	<b>Anode</b>	for IT-75 / T-Flow 75	replaceable anode 126700

### Get rid of algae!

Fibrous and slimy algae make poor demands on temperature and water quality. They can grow under circumstances when micro life and water plants cannot yet develop optimally. Besides, they absorb nutrients and catch the sunlight, so that water plants have no chance.

### T-Flow Tronic

A permanent solution for the algae problem is to apply an electronic equipment. Owing to electric pulses between the copper anode and stainless steel cathode, copper ions are released, which will fight fibrous and slimy algae quickly and simply and prevent them from developing.

2	Product name	Product description	Art.nr.
	<b>Alglets</b>	tablets against 10 tablets for 10.000 litres of water	algae in ponds 122405
	<b>Alglets</b>	tablets against 10 tablets display (24)	algae in ponds 122410

3	Product name	Product description	Art.nr.
	<b>Algae Blocks</b>	extra large tablets against 2 tablets for 3000 litres of water	algae in ponds 122421
	<b>Algae Blocks + Dispenser</b>	floating dispenser 4 tablets for 6000 litres of water	for algae tablets 122422
	<b>Algae Blocks + Dispenser</b>	floating dispenser 4 tablets display (84)	for algae tablets 122423



4	Product name	Product description	Art.nr.
	<b>Biofit</b>	brings the pond in top 500 ml for 5000 litres of water	condition again 120182

5	Product name	Product description	Art.nr.
	<b>All Clear</b>	removes and prevents fibrous 250 ml for 2500 litres of water	and slime algae 120076
	<b>All Clear</b>	removes and prevents fibrous 500 ml for 5000 litres of water	and slime algae 120077
	<b>All Clear</b>	removes and prevents fibrous 1000 ml for 10.000 litres of water	and slime algae 120078

6	Product name	Product description	Art.nr.
	<b>Crystal Clear</b>	makes green water 250 ml for 2500 litres of water	crystal clear again 120032
	<b>Crystal Clear</b>	makes green water 500 ml for 5000 litres of water	crystal clear again 120033
	<b>Crystal Clear</b>	makes green water 1000 ml for 10.000 litres of water	crystal clear again 120034

7	Product name	Product description	Art.nr.
	<b>Phos Stop</b>	bonds phosphate in the water 500 g for 10.000 litres	and prevents pond problems 120040
	<b>Phos Stop</b>	bonds phosphate in the water 1000 g for 20.000 litres	and prevents pond problems 120041

Fibrous algae are long, green threads in the pond. Slime algae look like yellow-green floating clouds. The algae absorb all nutrients in the pond water and suffocate the plants. The water will usually be clear. All Clear combats fibrous and slime algae in the pond so that water plants can start to grow.

### Green pond water

Floating algae will turn your pond water green. You can no longer see any of the fascinating life below the surface and the oxygen plants stop growing. Sunlight and nutrient-rich water lead to the rapid development of floating algae in the pond. Crystal Clear bonds floating algae and floating dirt. It makes green, turbid, pond water clear again quickly.

### Preventing algae

Phosphate in the pond is a nutrient source for algae. Phos Stop is a natural clay product that sinks to the bottom of the pond and bonds phosphate. Phos Stop can be used very early in the spring to prevent algae and give the water plants a chance.



# Spring fever in the pond

# 1

## Preventing algae

As winter comes to a close, organic debris will have accumulated in the pond. Dead plants and leaves sink slowly to the bottom of the pond and form a thick layer of sludge. This material is a source of nutrients for algae in the spring. **Bio-Oxydator** breaks down pond sludge and prevents the acidification of the pond bed, shutting out the algae.

**Tip:** Choose 100% natural for your pond with **Sludge Cleaner** from Vincia. This product line stands for sustainable pond care with minimal impact on the environment.

④



## Water hardness at the right level

Snow and rain can significantly reduce the hardness of the pond water due to a lack of minerals. So check water quality with an **Aqua Test Set** or **Strips**. Keep hardness at the right level. GH values between 8° and 12°DH, and KH values between 6° and 8°DH, are ideal.

If you know the water values, you can decide whether you need to take action. A sustainable approach is possible with a natural product that raises the hardness and improves the water quality. Opt for **Maërl** in powder form or the **Maërl Crystal** granules; they are easy to use.

⑤



# 3

## Green water prevention

The days are gradually getting longer and the sun is shining more often. Everything in the garden is turning green but, unfortunately, so is the water in the pond. Sunlight triggers algae growth in the pond, even before the water plants start to grow. Install a new **UV-C lamp** in the filter system to kill floating algae. The oxygen plants benefit and they will grow better. That will keep your pond water clear throughout the year.

⑥



- 1 **Bio-Oxydator** 1000 ml, 2500 ml, 5000 ml removes bottom sludge
- 2 **Sludge Cleaner** 1700 g, 4250 g removes organic sludge
- 3 **Mäerl** 700 g, 1800 g, 3300 g **Mäerl Crystal** 1500 g, 3600 g
- 4 **Aqua Test Strips** 50 pieces to measure pH, GH, KH, NO<sub>2</sub>, NO<sub>3</sub>, Cl<sub>2</sub>
- 5 **Aqua Test Set** to measure pH, GH and KH
- 6 **UV-C Lamp** 5, 7, 9, 11, 13, 18, 24, 36, 55 Watt for all PL fittings

*When spring arrives, you can help the pond and the fish to start up. The days are slowly getting longer and the sun is showing itself more often. A beautiful, sunny day is perfect for spring's first pond maintenance.*

## Fish in the spring

You will see your pond fish more often as days gets warmer. They get active and daily feeding is a good idea at a water temperature above 10°C. All Season is special fish feed for the transition from one season to the next. In addition to the range of fish feed products, you can find a complete pharmacy at SaniKoi to keep your fish healthy. Fish with open gills, frayed fins, white or dark spots and parasites need treatment.



⑧

⑨

## Starting up the pond

To boost the natural processes in the pond, immediately add a dose of **Bacterial**. These water-purifying bacteria stimulate the sludge reduction and plant growth in the pond.

**Tip:** Always keep a dose of Bacterial ready because it has a positive effect on your pond at many times throughout the year. The liquid bacteria can be kept for 12 months and the freeze-dried version has an unlimited shelf life.

- 7 **Bacterial** 50 ml, 200 ml, 1000 ml **Bacterial Liquid** 250 ml, 500 ml, 1000 ml
- 8 **Fish medication** 250 ml, 500 ml Bactimon, Paratex, Sapro, White Spot
- 9 **All Season Wheat Germs 6 mm** 3000 ml easily digestible fish food

⑦







# Happy fish will complete the pond

More and more, people are coming to see that pond fish are social animals, and that interaction goes much further than just throwing a handful of feed into the pond and observing the fish. Watching your fish becomes a unique experience with this floating transparent ball in the pond. The fish come and take a peek in the ball regularly, and that produces fantastic images. Close observation is also useful to discover fish affected by illness timely.



1	Product name	Product description	Art.nr.
	<b>Floating Fish Dome M</b>	floating transparent ball to observe pond fish	123503



2	Product name	Product description	Art.nr.
	<b>Fish transportation sack</b>	with round bottom and advice on fish care	129150
	<b>Fish transportation sack</b>	with round bottom and advice on fish care	129155
	<b>Fish transportation sack</b>	with round bottom and advice on fish care	129160



3	Product name	Product description	Art.nr.
	<b>Vivelda Flake Food</b>	fish food for koi, goldfish and veiltail fish	124461
	<b>Vivelda Sinking Pellet</b>	fish food for koi, goldfish and veiltail fish	124473
	<b>Vivelda 3-Colour Pellet</b>	fish food for koi, goldfish and veiltail fish	124479
	<b>Vivelda mix display</b>	fish food for koi, goldfish and veiltail fish	124485

Order now: [portal.velda.com](https://portal.velda.com)





# Fish feed



1	Product name	Product description	Art.nr.
	Nature Fish Food 1250 ml	natural fish food consists of water insects	124305
	Nature Fish Food 2500 ml	natural fish food consists of water insects	124311
2	Product name	Product description	Art.nr.
	Koi Nature Fish Food 1250 ml	natural koi food consists of silkworms	124350
	Koi Nature Fish Food 2500 ml	natural koi food consists of silkworms	124356
3	Product name	Product description	Art.nr.
	Rondett Fish Food 1250 ml	high-grade grain food for all kinds of pond fish	124410
	Rondett Fish Food 2500 ml	high-grade grain food for all kinds of pond fish	124416
4	Product name	Product description	Art.nr.
	3-Colour Pellet Food 1250 ml	high-grade 3-colour mix for all kinds of pond fish	124111
	3-Colour Pellet Food 2500 ml	high-grade 3-colour mix for all kinds of pond fish	124112

# natural ingredients



5	Product name	Product description	Art.nr.
	Winter Fish Food 1250 ml	sinking winter food with a low energetic value	124150
	Winter Fish Food 2500 ml	sinking winter food with a low energetic value	124156
6	Product name	Product description	Art.nr.
	Sturgeon Fish Food 1250 ml	sinking sturgeon food with a high energetic value	124251
	Sturgeon Fish Food 2500 ml	sinking sturgeon food with a high energetic value	124253
7	Product name	Product description	Art.nr.
	Gold Flakes Fish Food 1250 ml	flake food for all kinds of pond fish	124005
	Gold Flakes Fish Food 2500 ml	flake food for all kinds of pond fish	124011
8	Product name	Product description	Art.nr.
	Gold Sticks Fish Food 1250 ml	pellets for all kinds of pond fish	124050
	Gold Sticks Fish Food 2500 ml	pellets for all kinds of pond fish	124056

Many pond owners enjoy keeping and caring for fish. The range of fish species available for ponds is enormous and the number of fish in relation to the amount of water is often much higher than in the wild. You should keep in mind that the natural processes in the pond can easily be disturbed. Fish food and excrement pollute the water. Even so, with the right pond filtration, this is not a problem.

**Adequate and varied feed**  
Regular feeding is important for lively and healthy pond fish. As the water temperature rises ( > 10°C), their energy needs increase and they can be fed abundantly. You should alternate between special colour pellets or natural food. And you will never forget a feeding session with an automatic Fish Feeder for the pond.

Fish food types	crude protein	crude fat	crude fibre	ash	phosphorous	calcium	sodium	Additives per kg								
								iron	iodine	copper	manganese	zinc	vitamin A	vitamin D3	vitamin E	vitamin C
Gold Flakes Fish Food	21%	2,0%	1,7%	3,3%	0,6%	0,2%	0,8%	9 mg	0,7 mg	0,7 mg	3 mg	29 mg	2067 IU	295 IU	80 mg	210 mg
Gold Sticks Fish Food	18%	2,0%	1,6%	2,1%	0,4%	0,1%	0,2%	30 mg	2,5 mg	2,5 mg	10 mg	30 mg	7500 IU	-	150 mg	190 mg
Nature Fish Food	48,7%	6,5%	6,9%	21,7%	-	-	-	-	-	-	-	-	-	-	-	-
Koi Nature Fish Food	52%	27%	3,0%	4,0%	-	-	-	-	-	-	-	-	-	-	-	-
Rondett Fish Food	34%	5,0%	3,0%	6,9%	1,04%	1,0%	0,1%	60 mg	5 mg	5 mg	20 mg	60 mg	11000 IU	2968 IU	200 mg	250 mg
3-Colour Pellet Food	34%	6,0%	2,1%	7,3%	1,09%	1,3%	0,2%	62 mg	5,2 mg	5,2 mg	21 mg	62 mg	15667 IU	2794 IU	207 mg	277 mg
Winter Fish Food	32%	9,0%	2,2%	5,5%	0,9%	0,6%	0,6%	60 mg	5 mg	5 mg	20 mg	60 mg	10000 IU	2090 IU	200 mg	150 mg
Sturgeon Fish Food	34%	15%	1,7%	5,9%	1,05%	1,1%	0,2%	60 mg	5 mg	5 mg	20 mg	60 mg	10000 IU	2331 IU	200 mg	250 mg

Order now: [portal.velda.com](https://portal.velda.com)





1	Product name	Product description	Art.nr.
	<b>Gold Protein Plus 3 mm</b>	<i>with 52% protein</i>	
	1000 ml	<i>for good growth and health</i>	124645
	<b>Gold Protein Plus 3 mm</b>	<i>with 52% protein</i>	
	3000 ml	<i>for good growth and health</i>	124646
	<b>Gold Protein Plus 6 mm</b>	<i>with 52% protein</i>	
	3000 ml	<i>for good growth and health</i>	124647

2	Product name	Product description	Art.nr.
	<b>Excellent All-Round 3 mm</b>	<i>feed for excellent</i>	
	1000 ml	<i>growth an natural colours</i>	124600
	<b>Excellent All-Round 3 mm</b>	<i>feed for excellent</i>	
	3000 ml	<i>growth an natural colours</i>	124601
	<b>Excellent All-Round 3 mm</b>	<i>feed for excellent</i>	
	10.000 ml	<i>growth an natural colours</i>	124631
	<b>Excellent All-Round 6 mm</b>	<i>feed for excellent</i>	
	1000 ml	<i>growth an natural colours</i>	124610
	<b>Excellent All-Round 6 mm</b>	<i>feed for excellent</i>	
	3000 ml	<i>growth an natural colours</i>	124611
	<b>Excellent All-Round 6 mm</b>	<i>feed for excellent</i>	
	10.000 ml	<i>growth an natural colours</i>	124612

3	Product name	Product description	Art.nr.
	<b>Winter Wheat Food 3 mm</b>	<i>sinking winter food</i>	
	3000 ml	<i>will enhance the immune system</i>	124622
	<b>All Season Wheat Germs 6 mm</b>	<i>nutritious</i>	
	3000 ml	<i>and easily digestible in all seasons</i>	124630

4	Product name	Product description	Art.nr.
	<b>Colour Hi-Grow Mix 3 mm</b>	<i>lively colours with</i>	
	3000 ml	<i>Astaxanthin and Spirulina</i>	124635
	<b>Colour Hi-Grow Mix 6 mm</b>	<i>lively colours with</i>	
	3000 ml	<i>Astaxanthin and Spirulina</i>	124640
	<b>Colour Hi-Grow Mix 6 mm</b>	<i>lively colours with</i>	
	10.000 ml	<i>Astaxanthin and Spirulina</i>	124641

5	Product name	Product description	Art.nr.
	<b>Staple Prime 6 mm</b>	<i>pure natural and easily</i>	
	3000 ml	<i>digestible feed for healthy fish</i>	124540
	<b>Staple Prime 6 mm</b>	<i>pure natural and easily</i>	
	10.000 ml	<i>digestible feed for healthy fish</i>	124550
	<b>Staple Prime 6 mm</b>	<i>pure natural and easily</i>	
	20.000 ml	<i>digestible feed for healthy fish</i>	124551

6	Product name	Product description	Art.nr.
	<b>Sturgeon Pro green 6 mm</b>	<i>sinking sturgeon</i>	
	3000 ml	<i>food with special additives</i>	124581
	<b>Sturgeon Pro green 6 mm</b>	<i>sinking sturgeon</i>	
	10.000 ml	<i>food with special additives</i>	124582

Adequate and regular feeding is essential for all pond fish. Particularly for koi, to keep them active and healthy. Give them high-quality fish food for good growth and lively colours. More importantly, fish diseases can be prevented with quality food from SaniKoi.

#### Healthy pond and happy fish

As well as the high protein content, SaniKoi food products contain high-quality ingredients. This means that up to 97% of the feed is digested and the fish absorb the protein perfectly. Excreta are kept to a minimum and so the pond water stays clean longer.

In the wild, fish are constantly looking for food. Their digestion is geared to this. In the pond, large amounts of feed can cause indigestion and pollution of the pond environment. Therefore, dispense small portions several times a day so that the fish grow fast and produce less waste.

**Flyer**  
Provides pond owners  
information about feeding  
fish with SaniKoi.



SaniKoi food	crude protein	crude fat	crude fibre	ash	phosphorous	calcium	sodium	Additives per kg								
								iron	iodine	copper	manganese	zinc	vitamin A	vitamin D3	vitamin E	vitamin C
Gold Protein Plus	52%	8%	1,0%	10,5%	1,5%	2,2%	0,6%	75 mg	5,0 mg	5 mg	20 mg	80 mg	28000 IE	1920 IE	250 mg	500 mg
Excellent All-Round	45%	7%	2,0%	9,4%	1,2%	1,7%	0,3%	75 mg	5,0 mg	5,0 mg	20 mg	80 mg	26000 IE	2420 IE	400 mg	360 mg
Winter Wheat Food	36%	7%	3,7%	7,4%	1,2%	0,9%	0,1%	75 mg	5,0 mg	5,0 mg	20 mg	80 mg	10000 IE	2000 IE	200 mg	150 mg
All Season Wheat Germs	26%	4%	3,6%	8,1%	1,1%	1,4%	0,2%	94 mg	6,3 mg	6,3 mg	25 mg	100 mg	24900 IE	2702 IE	410 mg	990 mg
Colour Hi-Grow Mix	40%	7%	1,9%	9,3%	1,29%	1,7%	0,3%	62 mg	5,2 mg	5,2 mg	21 mg	41 mg	27300 IE	2451 IE	270 mg	340 mg
Staple Prime	37%	6%	2,0%	9,3%	1,31%	1,7%	0,3%	60 mg	5,0 mg	5,0 mg	20 mg	40 mg	28200 IE	2496 IE	200 mg	330 mg
Sturgeon Pro	47%	17%	1,1%	9,9%	1,4%	1,8%	0,4%	75 mg	5,0 mg	5,0 mg	20 mg	80 mg	10000 IE	2000 IE	200 mg	150 mg

Order now: [portal.velda.com](http://portal.velda.com)



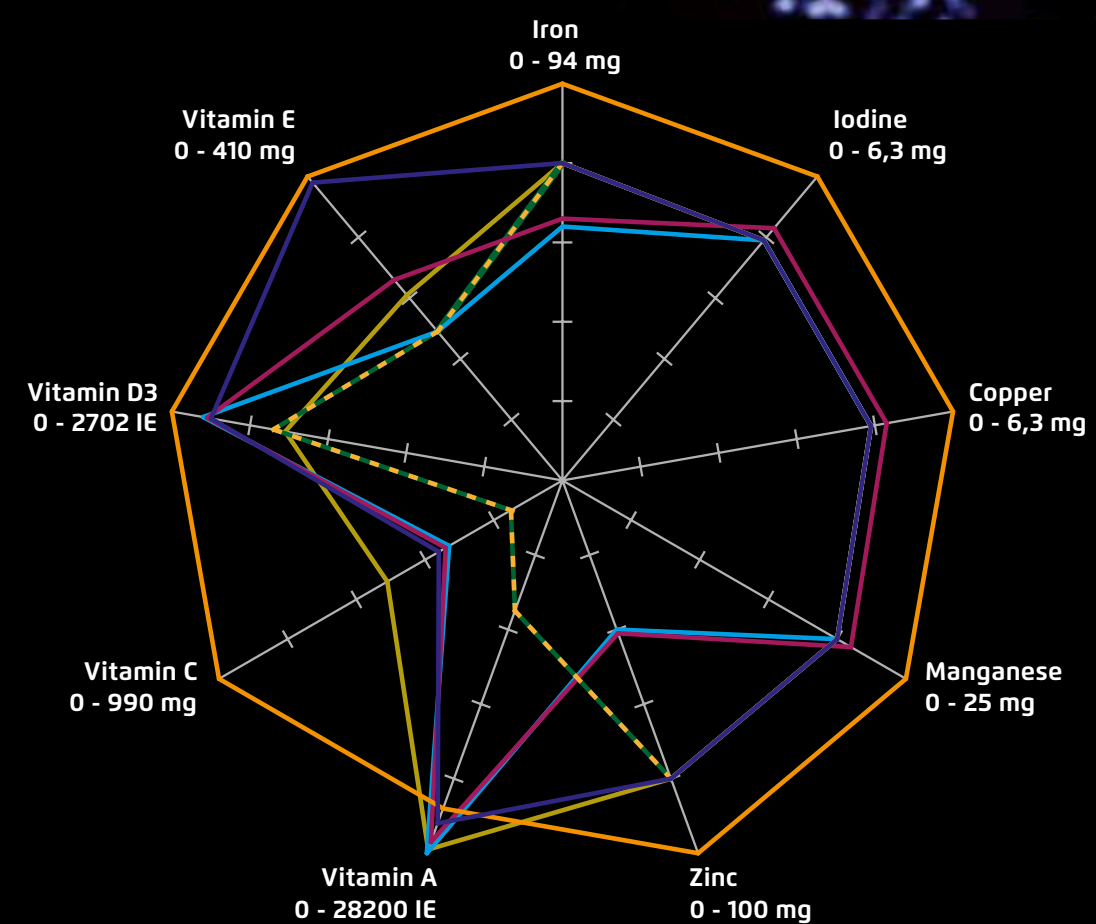
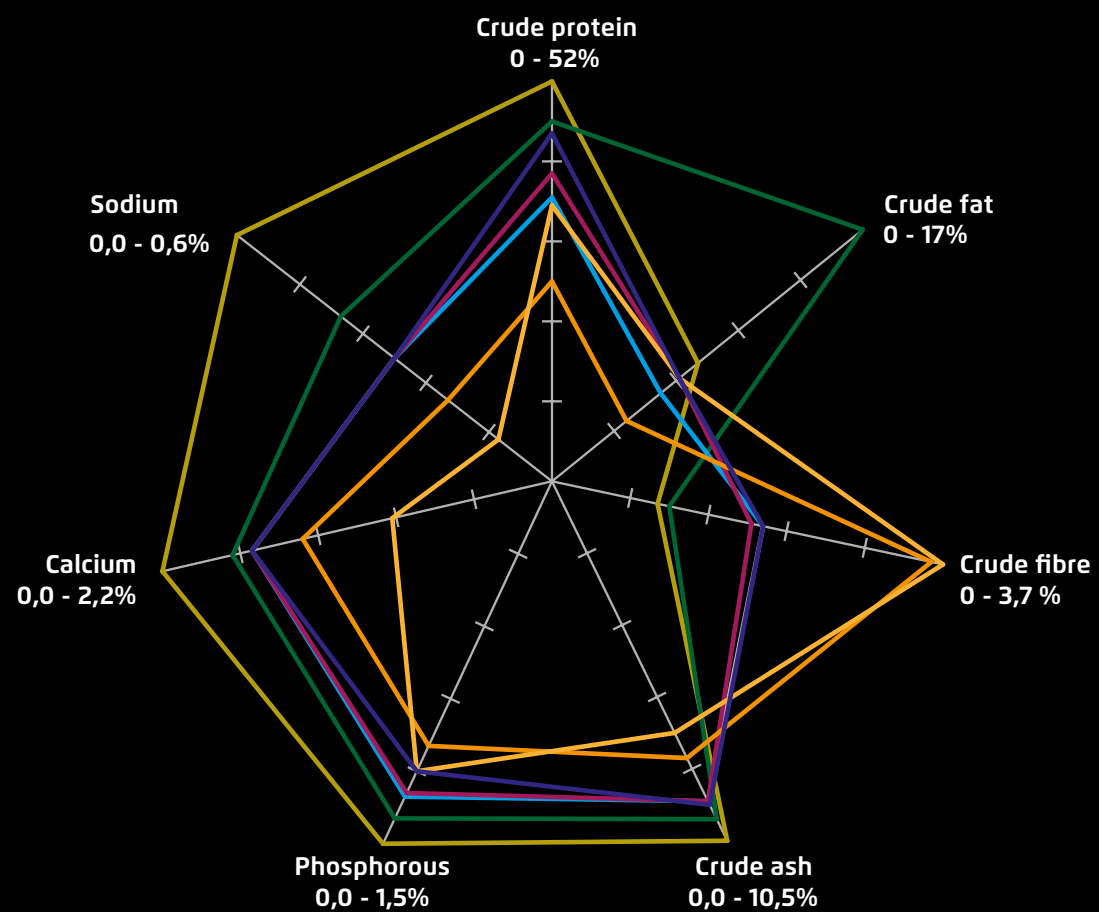


# SANIKOI



## Nutrition guide

- Gold Protein Plus
- Excellent All-Round
- Winter Wheat
- All Season
- Colour Hi-Grow Mix
- Staple Prime
- Sturgeon Pro







# Fish Medication for healthy fish



- 1

SaniKoi Bactimon

- bacterial infections
- Bactimon

250 ml

for 5000 litres of water

fish medicine against bacterial infections

121111

Bactimon

500 ml

for 10.000 litres of water

fish medicine against bacterial infections

121112
- 2

SaniKoi Paratex

- skin parasites
- Paratex

250 ml

for 5000 litres of water

fish medicine against single-celled skin parasites

121114

Paratex

500 ml

for 10.000 litres of water

fish medicine against single-celled skin parasites

121115
- 3

SaniKoi Sapro

- fungous diseases
- Sapro

250 ml

for 5000 litres of water

fish medicine against fungous diseases and general mycosis

121117

Sapro

500 ml

for 10.000 litres of water

fish medicine against fungous diseases and general mycosis

121118
- 4

SaniKoi White Spot

- protozoe
- White Spot

250 ml

for 5000 litres of water

fish medicine against white spot disease

121121

White Spot

500 ml

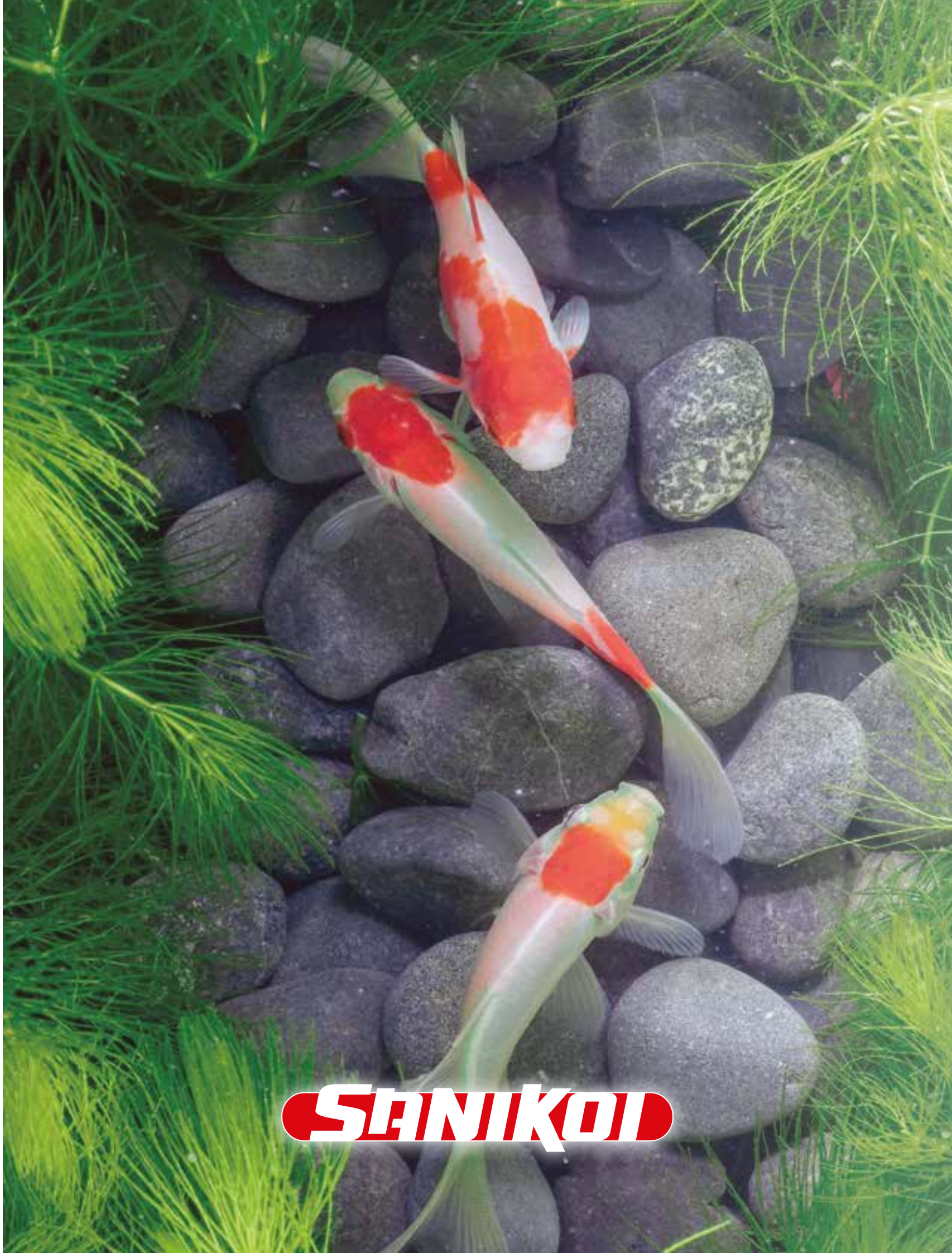
for 10.000 litres of water

fish medicine against white spot disease

121122

You will see your pond fish more often as the weather gets warmer. They get active and daily feeding is possible again at a water temperature above 10°C. Check the fish for signs of illness by observing them for a while. Fish with frayed fins, open gills, white or dark spots and parasites should be treated with a remedy from the SaniKoi pharmacy. In addition to these fast-acting remedies for fish that are ill, you can turn to SaniKoi for a complete range of quality feed to keep all the fish in your pond healthy.

Symptoms	Medication	active components per 100 ml	
Loss of skin, wounds, ulcers, swollen scales, swollen belly	Bactimon	Ethacridine lactate monohydrate 400 mg Acriflavine monochloride 200 mg	Methylthionine chloride 275 mg Methyle orange 26 mg
Carp louse (Argulus) Anchor worms (Lernea)	Paratex		Diflubenzuron 100 mg
Cotton wool-like disorder, frayed fins, mouth fungous	Sapro	Ethacridine lactate monohydrate 400 mg Acriflavine monochloride 200 mg	Methylthionine chloride 275 mg Copper(II) sulphate pentahydrate 1000 mg
Protozoe: Ichthyophthirius, Oodinium, Chilodonella, Ichthyobodo, Trichodina	White Spot	Malachite green oxalate 100 mg Acriflavine monochloride 30 mg	Methylthionine chloride 250 mg Methylrosaniline chloride 50 mg







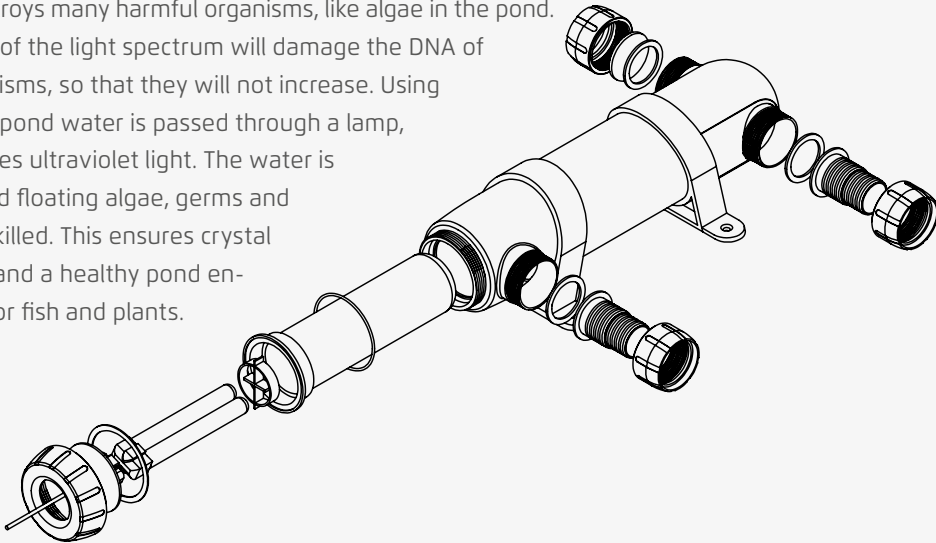
**Flyer**  
Provides pond owners information about UV sterilisation with the Clear Line UV-C.



# UV-C sterilisation keeps the pond water clear

Floating algae transform pond water into a green slurry. You can hardly see the fascinating underwater life and the growth of oxygen plants will stagnate. Green pond water is caused by floating algae and occurs especially in newly sunk ponds with nutrient-rich water. Their numbers will increase explosively. A permanent solution for green turbid pond water is a UV-C filter.

UV light destroys many harmful organisms, like algae in the pond. The UV part of the light spectrum will damage the DNA of micro-organisms, so that they will not increase. Using a UV-C filter pond water is passed through a lamp, which radiates ultraviolet light. The water is sterilised and floating algae, germs and moulds are killed. This ensures crystal clear water and a healthy pond environment for fish and plants.



1	Product name	Product description	Art.nr.
	<b>Clear Line UV-C</b>	attacks floating algae and germs	
	18 Watt	up to 9000 litres of water in the pond	126565
	<b>Clear Line UV-C</b>	attacks floating algae and germs	
	36 Watt	up to 18.000 litres of water in the pond	126566
	<b>Clear Line UV-C</b>	attacks floating algae and germs	
	55 Watt	up to 27.500 litres of water in the pond	126567

2	Product name	Product description	Art.nr.
	<b>UV-C Unit</b>	for Clear Control, Cross-Flow	
	9 Watt	for building in and Giant Biofill XL	126570
	<b>UV-C Unit</b>	for Clear Control, Cross-Flow	
	18 Watt	for building in and Giant Biofill XL	126575
	<b>UV-C Unit</b>	for Clear Control	
	36 Watt	for building in and Giant Biofill XL	126576
	<b>UV-C Unit</b>	for building in for Clear Control	126577



3	Product name	Product description	Art.nr.
	<b>UV-C PL Lamp</b>	universal UV-C lamp	
	5 Watt	for all 5 Watt PL fittings	126605
	<b>UV-C PL Lamp</b>	universal UV-C lamp	
	7 Watt	for all 7 Watt PL fittings	126610
	<b>UV-C PL Lamp</b>	universal UV-C lamp	
	9 Watt	for all 9 Watt PL fittings	126615
	<b>UV-C PL Lamp</b>	universal UV-C lamp	
	11 Watt	for all 11 Watt PL fittings	126620
	<b>UV-C PL Lamp</b>	universal UV-C lamp	
	13 Watt	for all 13 Watt PL fittings	126623
	<b>UV-C PL Lamp</b>	universal UV-C lamp	
	18 Watt	for all 18 Watt PL fittings	126625
	<b>UV-C PL Lamp</b>	universal UV-C lamp	
	24 Watt	for all 24 Watt PL fittings	146628
	<b>UV-C PL Lamp</b>	universal UV-C lamp	
	36 Watt	for all 36 Watt PL fittings	126630
	<b>UV-C PL Lamp</b>	universal UV-C lamp	
	55 Watt	for all 55 Watt PL fittings	126635







Flyer

Provides pond owners information about pond filtration with the Clear Control.



Pressure filters  
multifunctional and out of sight

A garden pond is more than just a container of water. It is a natural water biotope on a small scale. In free nature ponds are often much larger, biological processes are functioning properly, resulting in clear and healthy water. As to a garden pond nature has to be given a helping hand in order to reach a biological balance. Only then you can go on enjoying clear water, healthy plants and satisfied fish.

Ideal for a waterfall or stream

Pressure filters are quite suitable, besides their filter function, to feed streams, waterfalls or fountains with clear water. As the pressure filter can properly stand high pressure, it is capable to bridge a difference in height. Besides normal filtration various directions of water current are possible for administration of fish medicine, cleaning of the filter or emptying the pond. If a backwash function is involved, the water flow goes in opposite direction through the filter and carries along any accumulated dirt. A pressure filter is very user-friendly and easy to clean.

• **Multi position valve**  
makes it easy to clean the filter, empty the pond or use fish medication

• **UV-C lamp**  
destroys green floating algae and germs

• **Japanese mat**  
removes coarse dirt particles  
• **Active carbon**  
filters fine particles and colour  
• **Lava grit**  
good adherence of micro-organisms



1	Product name	Product description	Art.nr.
	<b>Clear Control 25 + UV-C</b>	pressure filter with up to 10.000 litres of water 6 functions + UV-C 9 Watt	126310
	<b>Clear Control 25 Set</b>	with UV-C Unit 9 Watt + Green Line 5000 + hose	126311
	<b>UV-C Unit</b>	for Clear Control, Cross-Flow and Giant Biofill XL	126570
	<b>Filter Material Set</b>	filter carbon, lava, Japanese mat + Bacterial Filterstart	127132

2	Product name	Product description	Art.nr.
	<b>Clear Control 50 + UV-C</b>	pressure filter with up to 20.000 litres of water 6 functions + UV-C 18 Watt	126330
	<b>Clear Control 50 Set</b>	with UV-C Unit 18 Watt + Green Line 8000 + hose	126331
	<b>UV-C Unit</b>	for Clear Control, Cross-Flow and Giant Biofill XL	126575
	<b>Filter Material Set</b>	filter carbon, lava, Japanese mat + Bacterial Filterstart	127133

3	Product name	Product description	Art.nr.
	<b>Clear Control 75 + UV-C</b>	pressure filter with up to 30.000 litres of water 6 functions + UV-C 36 Watt	126371
	<b>Clear Control 75 Set</b>	with UV-C Unit 36 Watt + Green Line 12500 + hose	126372
	<b>UV-C Unit</b>	for Clear Control and Giant Biofill XL	126576
	<b>Filter Material Set</b>	filter carbon, lava, Japanese mat + Bacterial Filterstart	127133

4	Product name	Product description	Art.nr.
	<b>Clear Control 100</b>	pressure filter with up to 60.000 litres of water 6 functions	126373
	<b>UV-C Unit</b>	for building in for Clear Control	126577
	<b>Filter material set</b>	filter wool, carbon and filtra-sub + filter nets	127123

Pressure filters	content	dimensions	capacity	max. pump	max. UV-C	hose swivels
Clear Control 25	25 litres	60 x 45 x 45	10.000 litres	5000 l/h	2 x 9 Watt	32/40 mm
Clear Control 50	50 litres	85 x 45 x 45	20.000 litres	8000 l/h	2 x 18 Watt	32/40 mm
Clear Control 75	75 litres	95 x 45 x 45	30.000 litres	12.500 l/h	2 x 36 Watt	32/40 mm
Clear Control 100	100 litres	95 x 60 x 60	60.000 litres	20.000 l/h	2 x 55 Watt	32/40/50 mm



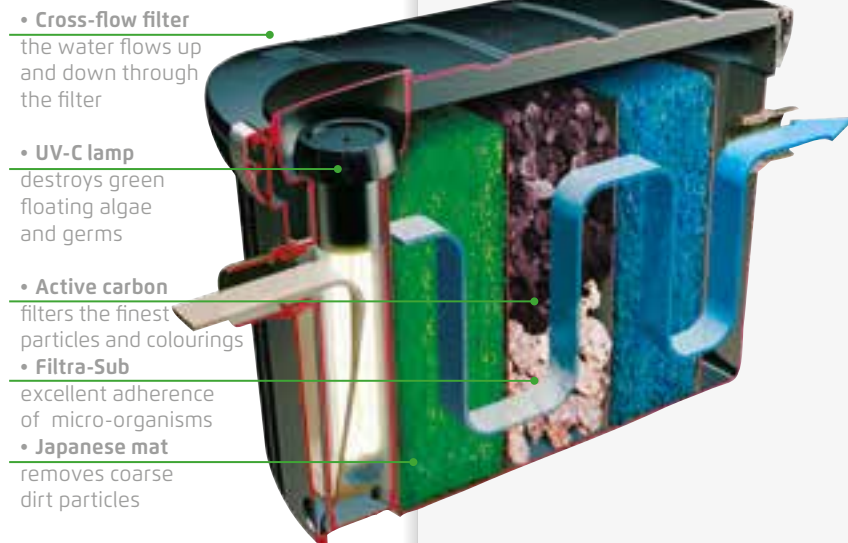
Find these products, spare parts and POS materials online at [portal.velda.com](https://portal.velda.com)





# Cross-flow filters mechanical and biological

In a multi-chamber or cross-flow filter the pond water will pass through various filter materials. The water is being circulated by a pond pump. In the initial phase, the coarse dirt is stopped by Japanese matting. Then the water is flowing through biological filter chambers with activated carbon, filter substrate or lava. This contains very useful bacteria, which are good for the pond. Finally the water will pass through a fine filtering by means of filter foam.



## Floating filter

No large pond full of fish, however, a smaller water garden which you want to keep clear? Then you should opt for the convenience of a floating filter. A compact combi filter with built-in pump and waterproof UV-C unit you simply place in your pond. The filtered water will flow over the top of the filter and causes beautiful wrinkling in your pond.

1	Product name	Product description	Art.nr.
	<b>Floating Combi Filter 2500</b>	floating pond filter up to 5000 litres of water + pump 2500 l/h + UV-C 13 W	126463
	<b>Filter Foam</b>	replaceable for Floating Combi Filter foam cartridge	126445
	<b>Filter Sock</b>	replaceable for Floating Combi Filter filter bag	126456



2	Product name	Product description	Art.nr.
	<b>Cross-Flow Biofill + UV-C</b>	multi-chamber filter up to 10.000 litres of water + UV-C Unit 18 Watt	126400
	<b>Cross-Flow Biofill Set</b>	with UV-C Unit 18 Watt up to 10.000 litres of water + Green Line 5000 + hose	126401
	<b>Filter Material Set</b>	carbon, filtra-sub, Japanese for Cross-Flow Biofill mat + Bacterial Filterstart	127134
	<b>Japanese mat fine</b>	replaceable for Cross-Flow Biofill filter mat	126420
	<b>Japanese mat coarse</b>	replaceable for Cross-Flow Biofill filter mat	126423



3	Product name	Product description	Art.nr.
	<b>Giant Biofill XL</b>	large multi-chamber filter with up to 20.000 litres of water cassettes + UV-C 18 Watt	126405
	<b>Giant Biofill XL Set 20000</b>	with UV-C 18 Watt + up to 20.000 litres of water Green Line 8000 + aeration	126406
	<b>Giant Biofill XL Set 40000</b>	with UV-C 36 Watt + up to 40.000 litres of water Green Line 12500 + aeration	126407
	<b>Giant Biofill XL Set 60000</b>	with UV-C 2x36 W + up to 60.000 litres of water Green Line 15000 + aeration	126408
	<b>Bio filter balls</b>	biological for Giant Biofill XL filter material	126414
	<b>Japanese mat</b>	replaceable for Giant Biofill XL filter mat	126432
	<b>Japanese mat</b>	replaceable for Giant Biofill XL filter mat	126433



Biofill filters	content	dimensions	capacity	max. pump	U-C Unit	hose swivels
Cross-Flow Biofill	75 litres	40 x 60 x 40	10.000 litres	5000 l/h	18 Watt	20-40/50 mm
Giant Biofill XL	210 litres	60 x 80 x 60	60.000 litres	15.000 l/h	18/36 Watt	32/40/50 mm

Find these products, spare parts and POS materials online at [portal.velda.com](https://portal.velda.com)





# Filter materials

## keep the water clear



1	Product name	Product description	Art.nr.
	<b>Filtralon Basic</b>	lightweight filter balls	
	700 g	remove tiny dirt particles	127140
	<b>Filtralon Hi-Active</b>	lightweight filter balls	
	700 g	remove tiny dirt particles	127145

2	Product name	Product description	Art.nr.
	<b>Activated Filter Carbon</b>	activated absorption	
	5000 ml	carbon for biological filters	127105
	<b>High Activated Filter Carbon</b>	pellets highly	
	5000 ml	active absorption carbon	126418

3	Product name	Product description	Art.nr.
	<b>Filter Net</b>	universal black filter net	
	20 x 30 cm display (100)	for all filter materials	127125
	<b>Filter Net</b>	universal black filter net	
	40 x 60 cm display (40)	for all filter materials	127127

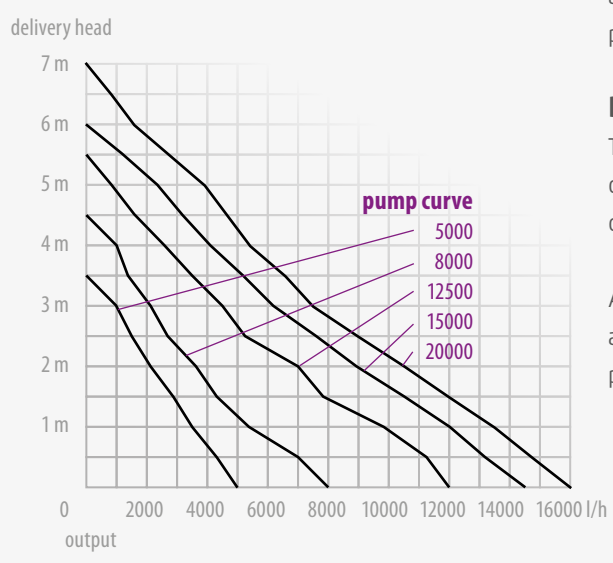


# Dirty water pumps

## for 24/7 water circulation

The Green Line pumps from Velda are used for the circulation of pond water. This dirty-water pump is installed in the pond and it can pump water with dirt particles of up to 6 mm without clogging up. Circulation pumps have to operate day and night, year in and year out. That is why long service life and low energy consumption are guaranteed. Owing to their large capacity, these pond pumps are very suitable for (pressure) filters, waterfalls and streams. Position the pump at the maximum depth in the pond and install the return hose as far away as possible from the pump to maximise water circulation.

**Flyer**  
Provides pond owners information about the Green Line dirty water pumps.



**Delivery head and output**  
The distance and the height to be overcome determine the capacity of the pump.

All Velda filters are also available as complete set with Green Line pond pump.

1	Product name	Product description	Art.nr.
	<b>Green Line 5000</b>		
	40 Watt max. 3,5 m	dirty water pump for ponds	126595
	<b>Green Line 8000</b>		
	70 Watt max. 4,5 m	dirty water pump for ponds	126596
	<b>Green Line 12500</b>		
	110 Watt max. 5,5 m	dirty water pump for ponds	126597
	<b>Green Line 15000</b>		
	135 Watt max. 6,0 m	dirty water pump for ponds	126598
	<b>Green Line 20000</b>		
	200 Watt max. 7,0 m	dirty water pump for ponds	126599



Green Line pumps	power	dimensions	output	delivery head	hose swivels
Green Line 5000	40 Watt	50 x 15 x 35	5000 l/h	max. 3,5 m	25/32/40 mm
Green Line 8000	70 Watt	50 x 15 x 35	8000 l/h	max. 4,5 m	25/32/40 mm
Green Line 12500	110 Watt	50 x 15 x 35	12000 l/h	max. 5,5 m	32/40/50 mm
Green Line 15000	135 Watt	50 x 15 x 35	14500 l/h	max. 6,0 m	32/40/50 mm
Green Line 20000	200 Watt	50 x 15 x 35	16000 l/h	max. 7,0 m	32/40/50 mm

Find these products, spare parts and POS materials online at [portal.velda.com](https://portal.velda.com)





Flyer

Provides pond owners information about pond aeration with the Silenta Outdoor.



In every season  
the pond in top condition

The Silenta Outdoor pump is rainwater-proof and it is located next to the pond. The air hose delivers oxygen to the air stone located in the pond. Oxygen is released into the water in the form of bubbles. At the same time, the bubbles remove harmful gases from deeper in the water. That prevents the suffocation of microlife and fish. For many years now, Silenta aeration pumps have been strong products in the Velda range. The new version has an improved engine and robust housing. You can rest assured of an extremely low noise level and long life.

Summer

When the water temperature rises, lack of oxygen often occurs. The fish will swim to the surface to gasp for air. And when you remove algae, you take away an important source of oxygen too. Aeration of the pond brings relief in that case. The bubbles of air will release oxygen and remove harmful gasses from the water.

Winter

When in winter the pond freezes over, fish mortality by suffocation often occurs. However, you should never smash a hole in the ice, because the vibrations are harmful to your fish. Aeration of the water is a better solution. The air bubbles will keep the pond ice-free and oxygen-rich.



1	Product name	Product description	Art.nr.
	<b>Pond Skimmer Pro</b> for 40 m <sup>2</sup>	<i>the floating surface cleaner with built-in pump</i>	126380



2	Product name	Product description	Art.nr.
	<b>Pond Heater</b> 300 Watt	<i>heater and freezing preventer for the pond or the filter</i>	128004

3	Product name	Product description	Art.nr.
	<b>Silenta Outdoor 1200</b>	<i>low-noise air pump with 15 Watt up to 3000 litres of water large air stone</i>	125080
	<b>Silenta Outdoor 1800</b>	<i>low-noise air pump with 25 Watt up to 7000 litres of water large air stone</i>	125085
	<b>Silenta Outdoor 3600</b>	<i>low-noise air pump with 35 Watt up to 15.000 litres of water large air stone</i>	125090
	<b>Silenta Outdoor 4800</b>	<i>low-noise air pump with 65 Watt up to 25.000 litres of water large air stones</i>	125098
	<b>Silenta Outdoor 6000</b>	<i>low-noise air pump with 80 Watt up to 50.000 litres of water large air stones</i>	125099
	<b>Giant Air Stone XXL</b> 8/10 mm	<i>extra large air stone</i>	125325



Silenta pumps	power	afmetingen	output	air hose	air stone
Silenta Outdoor 1200	15 Watt	16 x 12 x 16	20 l/min	5 m, Ø 8 mm	XXL
Silenta Outdoor 1800	25 Watt	16 x 12 x 16	30 l/min	5 m, Ø 8 mm	XXL
Silenta Outdoor 3600	35 Watt	20 x 16 x 20	60 l/min	5 m, Ø 8 mm	XXL
Silenta Outdoor 4800	65 Watt	24 x 20 x 24	80 l/min	2 x 5 m, Ø 8 mm	2 x XXL
Silenta Outdoor 6000	80 Watt	24 x 20 x 24	100 l/min	2 x 5 m, Ø 8 mm	2 x XXL

Find these products, spare parts and POS materials online at [portal.velda.com](https://portal.velda.com)



# Hibernation in the pond

# 1

## Keep the pond free of ice

If you aerate the pond continuously, cold weather will never catch you by surprise. The air bubbles keep the water moving and stop it from freezing. In addition, harmful gases that have accumulated in the pond are removed. This ensures that your fish won't suffocate and it keeps the aquatic habitat healthy.

Opt for a **Silenta Outdoor** air pump that can cope with winter weather. This pump is positioned alongside the pond and it takes oxygen to the air stone in the pond through the hose.



# 2

## Pond fish in the winter

Pond fish are cold-blooded animals that take on the ambient temperature. Digestion and actions of the fish are slower in cold water. It is enough to feed the fish twice a week at a water temperature below 6°C. Give them special **Winter Fish Food** with lower energy values. This feed also sinks to the bottom of the pond where the fish are.

**Tip:** Has the pond frozen over after all? You should never chop a hole in the ice because the vibrations can injure the internal organs of your fish. Make a hole by putting a pan of hot water on the ice. And then put an ice preventer in place to keep the hole open.



*In winter time your pond is at rest. The fish are less active and the plants 'hibernate'. It is important to make sure your pond doesn't freeze over. Keep a close eye on the weather forecast, particularly night-time temperatures, and get your pond ready to cope with sub-zero temperatures.*

## Keep your hands dry

In the winter, you leave the pond alone. But you sometimes have to do something in the water. Without proper protection, that can be an unpleasant job. You can keep your hands, arms and clothes dry by wearing these long waterproof gloves during pond maintenance. **Pond Gloves** cover the entire arm and they are kept in place with an elastic strip. They are also very convenient for putting in pond plants, pruning, cleaning, and installing and maintaining pond equipment.

**Tip:** To keep the pond partially ice-free, you can opt for a Velda **Pond Heater**. This heating element with a float is user-friendly and effective!



# 3

## Protection against herons

Hungry herons go looking for food and the fish in the pond are an easy prey. There are several ways to protect your fish from this threat.

A fence with an electric wire around the pond is very effective. An unpleasant shock is felt when the wire is touched, keeping herons, cormorants and cats away from the pond. With the **Ultra Protector**, a fence of 100 metres long can be fitted out with two electric wires.



- 1 **Silenta Outdoor** 1200, 1800, 3600, 4800, 6000 aeration set
- 2 **Winter Fish Food** 1250 ml and 2500 ml sinking winter food
- 3 **Ultra Protector** set for electric fencing of 100 metres



- 4 **Pond Heater** watertight gloves
- 5 **Pond Heater** freezing preventer





Flyer

Provides pond owners information about the Laser Guard or Ultra Protector.



# Protect the pond fish from herons and cats

Electric fence

A very effective way of keeping unwanted animals away from the pond is to install an electric fence. The unpleasant experience of the shock causes an instinctive flight response in herons, cormorants and cats so that they stay away. Fish will be safe in the pond again. Using the Ultra Protector an electric fence of 2 wires up to 100 metres can be installed. A wire at a height of 25 cm against herons and a wire at 15 cm against cats and small animals.

Light flashes and laser beams

The motion sensor of the Laser Guard detects approaching intruders and emits bright flashes of light, green laser beams and optionally also scare noises. Even before the heron lands at the pond side, he will take flight and leave the fish alone. Because herons quickly get used to deter methods there is variation in the program. Also cats who want to approach the pond are scared off.

Reflecting daylight

Herons will be shocked by the restless light reflections, caused by a shining spinner or floater. The Heron Stop Spinner and Heron Stop Reflector work according to this principle. Besides, such glittering bird scarer is a decorative element in the garden for keeping herons and pigeons away.

1	Product name	Product description	Art.nr.
	<b>Heron Stop Spinner</b>	spinning pendent to scare away herons and pigeons	128033



2	Product name	Product description	Art.nr.
	<b>Heron Stop Reflector</b>	reflecting floater to scare away herons and pigeons	128037
	<b>Heron Stop Spinner + Reflector</b>	display (36) 20 x Spinner + 16 x Reflector	128036



3	Product name	Product description	Art.nr.
	<b>Laser Guard</b>	scare-heron by green laser beams, flashes of light and sound	128068



4	Product name	Product description	Art.nr.
	<b>Ultra Protector</b>	electric fence to scare away intruders	128026
	for 100 m		

5	Product name	Product description	Art.nr.
	<b>Pond Protector</b>	electric fence to scare away herons and cats	128020
	for 40 m		
	<b>Extension Set</b>	additional electric fence, 80 m	128025



6	Product name	Product description	Art.nr.
	<b>Heron Stop</b>	nylon fence with bells to scare away herons	128010



7	Product name	Product description	Art.nr.
	<b>Garden Protector</b>	electric fence to protect the garden against intruders	841100





# Maintenance

## essential for the pond



1	Product name	Product description	Art.nr.
	<b>Cover Net</b> 2 x 3 m    10 pegs	<i>finely-woven cover net for several years of use</i>	127507
	<b>Cover Net</b> 4 x 3 m    14 pegs	<i>finely-woven cover net for several years of use</i>	127512
	<b>Cover Net</b> 6 x 5 m    22 pegs	<i>finely-woven cover net for several years of use</i>	127517
	<b>Cover Net</b> 6 x 10 m    32 pegs	<i>finely-woven cover net for several years of use</i>	127523



2	Product name	Product description	Art.nr.
	<b>Duo Pond Tool</b>	<i>pond cutter and pincers in one tool</i>	128007
	<b>Replacement Blades</b> 5 pieces    for Duo Pond Tool	<i>replaceable blades for Duo Pond Tool</i>	128009
	<b>Replacement Grips</b> 2 pieces    for Duo Pond Tool	<i>replaceable grips for Duo Pond Tool</i>	128011



3	Product name	Product description	Art.nr.
	<b>Pond Brush</b>	<i>special pond brush with a range of 2 metres</i>	128008



4	Product name	Product description	Art.nr.
	<b>Pond Net</b> Ø 35 cm	<i>round black scoop net with telescopic rod</i>	127630
	<b>Pond Net</b> Ø 46 cm	<i>round black scoop net with telescopic rod</i>	127631
	<b>Pond Net</b> square 35 cm	<i>square black scoop net with telescopic rod</i>	127632
	<b>Pond Net</b> square 46 cm	<i>square black scoop net with telescopic rod</i>	127633
	<b>Pond Net Daphnia</b> Ø 35 cm	<i>finely-woven white scoop net with telescopic rod</i>	127634
	<b>Pond Net Daphnia</b> square 35 cm	<i>finely-woven white scoop net with telescopic rod</i>	127642
	<b>Telescopic rod</b> max. 180 cm	<i>extension rod for Pond Net</i>	127636



5	Product name	Product description	Art.nr.
	<b>Fish Feeder Plus</b> 3000 ml	<i>automatic feeding system for all pond fish</i>	124817

6	Product name	Product description	Art.nr.
	<b>Fish Feeder Easy</b> 2500 ml	<i>automatic feeding system for all pond fish</i>	124834



7	Product name	Product description	Art.nr.
	<b>Extension cable universal</b> 10 m	<i>universal safety cable for outdoor use</i>	128066



The Fish Feeder Plus automatically feeds your the pond fish are fed the appropriate amount several times a day. Besides the preset feeding schedule, additional feeding is possible at any time using the control unit.

Fish digest food quickly, so they benefit from several small portions per day. They grow well and stay healthy. Large portions are not eaten in full. Fish food sinks to the bottom and contaminates the pond, adversely affecting water quality.

**Feeding aid for daily use and holidays**  
It is not always possible to feed the fish several times a day when you have a full agenda and a busy schedule. In bad weather conditions, the fish are sometimes forgotten. Also during holidays and time spent away, you want to be sure that your fish are properly fed daily. A Fish Feeder is a feed dispenser for daily use; ideal during holidays!





*Just relax for a while  
after a busy day at your  
own water garden: who  
does not want to do that!  
Water brings peace, but  
also liveliness in a garden,  
patio or on the balcony.*

# Everything for mini-ponds

# 1

## Choose form and size

**Fountain Ponds** are lightweight mini-ponds for any garden, terrace, balcony or interior. Choose between round or square and two sizes. With fountain pump and plant basket.

# 2

## Mini-pond preparation

First, clean the mini-pond and place it level at the desired location. Apply a layer of substrate or pond gravel. Use special **Mini-Pond Substrate** for clear water and healthy plants for a long period of time. Now fill the mini-pond with tap water and note: top up regularly with tap water!

**Tip:** Choose a shady spot for the mini-pond so that the sun does not heat up the water too much and algae do not form.



②



③

# 3

## Make it perfect with plants

A real pond feeling is created when you add plants to the mini-pond. Ideal pond plants are *Japanese Pipewort*, *Marsh-marigold*, *Arrowhead* and *Iris*. For potting, use substrate or gravel and **Plant Baskets**. To keep the water clear, add some *Hornwort* or *Waterweed*.

**Tip:** Put a few **Growth Balls** in the plant basket for a good start of pond plants.



④



⑤



⑦

**Tip:** Enjoy blooming water lilies immediately with the **Floating Foam Flowers** from Velda.



⑨

## Even more atmosphere

The mini-pond becomes even more lively with a splashing fountain! **Super Fountain Pump** comes with a water bubble and a fountain head. A fantastic addition for the large square Fountain Pond is the **waterfall**. The gently-murmuring water flows through the mini-pond.

You can create a mysterious atmosphere on the water by adding a **Floating mist-maker**.



⑧



⑥

- 6 Super Fountain Pump 800 11 Watt
- 7 Fountain Pond Waterfall □ 75 x 35 cm with waterfall
- 8 Floating Mistmaker 60 Watt
- 9 Lotus Foam white, pink, fuchsia, purple, orange, yellow

- 1 Fountain Pond Ø 75 x 35 cm, □ 55 x 32 cm, □ 75 x 35 cm (also with waterfall)
- 2 Mini-Pond Substrate 4 kg
- 3 Pond Gravel 4-6 mm, 8-12 mm, 2 liter, 8 liter, 15 liter
- 4 Plant Basket □ 18 cm, □ 25 cm, □ 30 cm, Ø 15 cm, Ø 25 cm
- 5 Growth Balls 185 g fertilizer for water plants





# Water is fun for large and small ponds

‘We want water in our garden’ is a desire which is often uttered by garden lovers. Just relax for a while after a busy day at your own water garden: who does not want to do that! Water brings peace, but also liveliness in a garden. Dragonflies and birds will visit your garden, terrace or balcony more frequently. Velda offers products for large and small ponds. For smaller gardens, patios and balconies, the Velda mini ponds are the perfect way to enjoy water.



1	Product name	Product description	Art.nr.
	<b>Lotus foam orange</b>		
	Ø 10 cm	floating flower, orange	123632
	<b>Lotus foam orange</b>		
	Ø 17 cm	floating flower, orange	123665
	<b>Lotus foam yellow</b>		
	Ø 10 cm	floating flower, yellow	123633
	<b>Lotus foam yellow</b>		
	Ø 17 cm	floating flower, yellow	123666
	<b>Lotus foam white</b>		
	Ø 10 cm	floating flower, white	123581
	<b>Lotus foam white</b>		
	Ø 17 cm	floating flower, white	123586
	<b>Lotus foam pink</b>		
	Ø 10 cm	floating flower, pink	123583
	<b>Lotus foam pink</b>		
	Ø 17 cm	floating flower, pink	123588
	<b>Lotus foam fuchsia</b>		
	Ø 10 cm	floating flower, fuchsia	123582
	<b>Lotus foam fuchsia</b>		
	Ø 17 cm	floating flower, fuchsia	123587
	<b>Lotus foam purple</b>		
	Ø 10 cm	floating flower, purple	123584
	<b>Lotus foam purple</b>		
	Ø 17 cm	floating flower, purple	123589

2	Product name	Product description	Art.nr.
	<b>Floating Mistmaker</b>	floating mist maker for a	
	60 Watt	mysterious atmosphere on the water	123691

3	Product name	Product description	Art.nr.
	<b>Pond Filter Bowl</b>	water bowl with waterfall	
	Ø 75 x 35 cm	and filter feature	123522

4	Product name	Product description	Art.nr.
	<b>Fountain Pond</b>	round patio pond with	
	Ø 75 x 35 cm	fountain pump and plant basket	123518
	<b>Fountain Pond</b>	square patio pond with	
	55 x 55 x 32 cm	fountain pump and plant basket	123515
	<b>Fountain Pond</b>	square patio pond with	
	75 x 75 x 35 cm	fountain pump and plant basket	123516
	<b>Fountain Pond Waterfall</b>	square patio pond	
	75 x 75 x 35 cm	with cascade and plant baskets	123519
	<b>Waterfall</b>	waterfall extension	
	75 x 15 cm for Fountain Pond 75 x 75 x 35 cm		269910





# Enjoy water plants growing your own

Experience the pleasure of growing your own plants and enjoy your water plants as they grow. Now everyone can see for themselves how seeds germinate, develop roots and grow. With the small glass vases, you can watch exactly how they develop from seed to plant. In combination with the wooden frame, the starter set is also a decorative extra on your windowsill.



1	Product name	Product description	Art.nr.
	<b>Lucky Lotus</b> white	grow your own lotus seeds in glass tubes with frame	127536
	<b>Lucky Lotus</b> pink	grow your own lotus seeds in glass tubes with frame	127537
	<b>Lucky Lotus</b> fuchsia	grow your own lotus seeds in glass tubes with frame	127538
	<b>Lucky Lotus</b> purple	grow your own lotus seeds in glass tubes with frame	127539
	<b>Lucky Lotus</b> mix	grow your own lotus seeds in glass tubes with frame	127540
	<b>Lucky Lotus</b> combi display	8 x white + 8 x pink + 8 x fuchsia + 8 x purple + 8 x mix	127541







A complete range of  
affordable pond products

# Clear water

1	Product name	Product description	Art.nr.
	<b>Pond Test Set</b>	measures accurately the pH, GH pH / GH / KH and KH of the pond water	180580



2	Product name	Product description	Art.nr.
	<b>Superalite</b> 7 kg / 10 l	bottom substrate for a natural balance in the pond	143005
	<b>Superalite</b> 14 kg / 20 l	bottom substrate for a natural balance in the pond	143010
	<b>Superalite</b> 23 kg / 35 l	bottom substrate for a natural balance in the pond	143015



3	Product name	Product description	Art.nr.
	<b>Premium Substrate</b> 6 kg / 10 l	biological nutrient medium for ponds	143050
	<b>Premium Substrate</b> 12.5 kg / 20 l	biological nutrient medium for ponds	143055





# Private Label



1	Product name	Product description	Art.nr.
	<b>Flake Food</b>	floating flake food for all kinds of pond fish	144279
	<b>Flake Food</b>	floating flake food for all kinds of pond fish	144280



2	Product name	Product description	Art.nr.
	<b>Sticks</b>	floating sticks for all kinds of pond fish	144281
	<b>Sticks</b>	floating sticks for all kinds of pond fish	144282



3	Product name	Product description	Art.nr.
	<b>3-Colour Sticks</b>	3-colour sticks for all kinds of pond fish	144283
	<b>3-Colour Sticks</b>	3-colour sticks for all kinds of pond fish	144284



4	Product name	Product description	Art.nr.
	<b>3-Colour Grains 3 mm</b>	3-colour pellets for all kinds of pond fish	144287
	<b>3-Colour Grains 3 mm</b>	3-colour pellets for all kinds of pond fish	144288
	<b>3-Colour Grains 3 mm</b>	3-colour pellets for all kinds of pond fish	144293



5	Product name	Product description	Art.nr.
	<b>Sturgeon Food</b>	sinking food with a high energetic value	144285
	<b>Sturgeon Food</b>	sinking food with a high energetic value	144286

Private label fish food comes with **your logo** on the labels. Ask for the possibilities.

# Fish Food



6	Product name	Product description	Art.nr.
	<b>White Sticks Premium</b>	pond fish food with vitamins, in useful bag	144350
	<b>3-Colour Sticks Premium</b>	pond fish food with vitamins, in useful bag	144405
	<b>3-Colour Pellets Premium</b>	pond fish food with vitamins, in useful bag	144411
	<b>Koi Pellets Premium</b>	pond fish food with vitamins, in useful bag	144450



7	Product name	Product description	Art.nr.
	<b>Fish Food 2-Colour Pellet 3 mm</b>	for all kinds of pond fish	181715
	<b>Fish Food 2-Colour Pellet 3 mm</b>	for all kinds of pond fish	181720
	<b>Fish Food 2-Colour Pellet 3 mm</b>	for all kinds of pond fish	181725



8	Product name	Product description	Art.nr.
	<b>Fish Food 3-Colour Sticks</b>	for all kinds of pond fish	181700
	<b>Fish Food 3-Colour Sticks</b>	for all kinds of pond fish	181705
	<b>Fish Food 3-Colour Sticks</b>	for all kinds of pond fish	181710



9	Product name	Product description	Art.nr.
	<b>Pond feeding ring</b>	prevents the fish feed from floating away	148105



10	Product name	Product description	Art.nr.
	<b>Quick Feeder</b>	wireless feed dispenser, works on batteries	144500



Order now: [portal.velda.com](https://portal.velda.com)





1	Product name	Product description	Art.nr.
	<b>Submersible Pump 5000</b>	self-priming	
	250 Watt	max. 6,0 m	sump pump with built-in float 146200
	<b>Submersible Pump 7000</b>	self-priming	
	350 Watt	max. 7,0 m	sump pump with built-in float 146201
	<b>Submersible Pump 11000</b>	self-priming	
	550 Watt	max. 8,5 m	sump pump with built-in float 146202



2	Product name	Product description	Art.nr.
	<b>Indoor Pump 400</b>	pump for indoor fountains	
	7 Watt	max. 0,9 m	and water ornaments 146156
	<b>Indoor Pump 700</b>	pump for indoor fountains	
	10 Watt	max. 1,2 m	and water ornaments 146157



3	Product name	Product description	Art.nr.
	<b>Super Fountain Pump 400</b>	pump with	
	10 Watt	max. 1,0 m	water bubble and fountain head 146158
	<b>Super Fountain Pump 800</b>	pump with	
	11 Watt	max. 1,2 m	water bubble and fountain head 146159
	<b>Super Fountain Pump 1000</b>	pump with	
	12 Watt	max. 1,5 m	water bubble and fountain head 146160
	<b>Super Fountain Pump 2000</b>	pump with	
	25 Watt	max. 2,0 m	water bubble and fountain head 146161
	<b>Super Fountain Pump 3000</b>	pump with	
	45 Watt	max. 2,5 m	water bubble and fountain head 146162
	<b>Super Fountain Pump 4000</b>	pump with	
	70 Watt	max. 3,0 m	water bubble and fountain head 146167



4	Product name	Product description	Art.nr.
	<b>Econo Pond Pump 2000</b>		
	26 Watt	max. 1,95 m	strong dirty water pump 146163
	<b>Econo Pond Pump 4000</b>		
	68 Watt	max. 3,0 m	strong dirty water pump 146164
	<b>Econo Pond Pump 6000</b>		
	130 Watt	max. 4,1 m	strong dirty water pump 146166
	<b>Econo Pond Pump 8000</b>		
	180 Watt	max. 5,0 m	strong dirty water pump 146168



5	Product name	Product description	Art.nr.
	<b>Clean Pond UV-C</b>	attacks floating algae and	
	7 Watt	up to 3500 litres of water	germs in the pond 146541
	<b>Clean Pond UV-C</b>	attacks floating algae and	
	9 Watt	up to 4500 litres of water	germs in the pond 146542
	<b>Clean Pond UV-C</b>	attacks floating algae and	
	11 Watt	up to 5500 litres of water	germs in the pond 146543
	<b>Clean Pond UV-C</b>	attacks floating algae and	
	18 Watt	up to 9000 litres of water	germs in the pond 146544

UV-C lamps on page 33

# Pumps & Filters



6	Product name	Product description	Art.nr.
	<b>All-in-1 Filter Fountain</b>	+ UV-C 11 W + pump	
	2000 l/h	up to 6000 litres	+ LED + day/night sensor 146185
	<b>Set filter material</b>	filter foam, bio filter balls and	
		for All-in-1 Filter Fountain	ceramic tubes 269759



7	Product name	Product description	Art.nr.
	<b>Pressure Filter 6000</b>	pressure filter	
		up to 6000 litres of water	+ UV-C 9 W 146051
	<b>Pressure Filter 10000</b>	pressure filter	
		up to 10.000 litres of water	+ UV-C 18 W 146052
	<b>Pressure Filter 15000</b>	pressure filter	
		up to 15.000 litres of water	+ UV-C 24 W 146053
	<b>Filter Foam</b>	replaceable	
		for PF-6000	filter foam 269722
	<b>Filter Foam</b>	replaceable	
		for PF-10000 / 15000	filter foam 269729
	<b>Bio filter balls</b>	replaceable	
		for Pressure Filter	filter material 146103



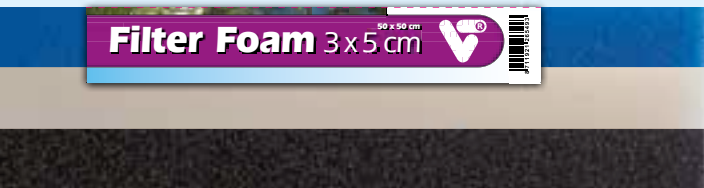
8	Product name	Product description	Art.nr.
	<b>Ready Filter Set 6000</b>	+ UV-C 9 W + pump	
		up to 6000 litres of water	1500 l/h + hose 146033
	<b>Ready Filter Set 9000</b>	+ UV-C 11 W + pump	
		up to 9000 litres of water	2000 l/h + hose 146034
	<b>Filter Foam</b>	replaceable	
		for RFS 6000	filter material 269716
	<b>Filter Foam</b>	replaceable	
		for RFS 9000	filter material 269717



9	Product name	Product description	Art.nr.
	<b>Box Filter 4000</b>	compact pond filter with	
		up to 4000 litres of water	filter materials 146036
	<b>Box Filter Set 4000</b>	compact pond filter + pump	
		up to 4000 litres of water	1000 l/h + hose 146037
	<b>Box Filter 7000</b>	compact pond filter with	
		up to 7000 litres of water	filter materials 146038
	<b>Box Filter Set 7000</b>	compact pond filter + pump	
		up to 7000 litres of water	2000 l/h + hose 146039

Order now: [portal.velda.com](http://portal.velda.com)





1	Product name	Product description	Art.nr.
	<b>Filter Foam 3 x 2 cm</b>	<i>fine, medium and coarse filter foam</i>	
	50 x 50 x 2 cm	3 pieces	142243
	<b>Filter Foam 3 x 5 cm</b>	<i>fine, medium and coarse filter foam</i>	
	50 x 50 x 5 cm	3 pieces	142244



2	Product name	Product description	Art.nr.
	<b>Filter Foam white</b>	<i>fine filter foam</i>	
	50 x 50 x 2 cm	adjustable to any filter	142234
	<b>Filter Foam white</b>	<i>fine filter foam</i>	
	50 x 50 x 5 cm	adjustable to any filter	142231



3	Product name	Product description	Art.nr.
	<b>Filter Foam blue</b>	<i>medium filter foam</i>	
	50 x 50 x 2 cm	adjustable to any filter	142235
	<b>Filter Foam blue</b>	<i>medium filter foam</i>	
	50 x 50 x 5 cm	adjustable to any filter	142232



4	Product name	Product description	Art.nr.
	<b>Filter Foam black</b>	<i>coarse filter foam</i>	
	50 x 50 x 2 cm	adjustable to any filter	142236
	<b>Filter Foam black</b>	<i>coarse filter foam</i>	
	50 x 50 x 5 cm	adjustable to any filter	142233

# Filter materials

5	Product name	Product description	Art.nr.
	<b>Filter Carbon</b>	<i>removes the finest dirt particles with filter net in a useful bucket</i>	
	5000 ml		142210
	<b>Filter Zeolite</b>	<i>removes nitrates and phosphates with filter net in a useful bucket</i>	
	5000 ml		142215
	<b>Filter Lava</b>	<i>biological filter material with filter net in a useful bucket</i>	
	5000 ml		142228
	<b>Bio Filter Balls</b>	<i>biological filter material in a useful bucket</i>	
	5000 ml		142229
	<b>Filter net universal</b>	<i>keeps the filter materials together and prevents them from flushing</i>	
	36 x 56 cm		146105



7	Product name	Product description	Art.nr.
	<b>Pond Filter Wool green</b>	<i>universal filter wool with a large filter capacity</i>	
	100 g		147005
	<b>Pond Filter Wool green</b>	<i>universal filter wool with a large filter capacity</i>	
	250 g		147010
	<b>Pond Filter Wool green</b>	<i>universal filter wool with a large filter capacity</i>	
	500 g		147015



8	Product name	Product description	Art.nr.
	<b>Pond Filter Wool blue</b>	<i>universal filter wool with a coarse structure</i>	
	100 g		147020
	<b>Pond Filter Wool blue</b>	<i>universal filter wool with a coarse structure</i>	
	250 g		147025
	<b>Pond Filter Wool blue</b>	<i>universal filter wool with a coarse structure</i>	
	500 g		147030



# Connection parts



1	Product name	Product description	Art.nr.
	<b>Hose Socket Set + screw</b>		
	13-25 mm / 1 inch	for a perfect filtration of ponds	146925
	<b>Hose Socket Set + screw</b>		
	25-40 mm / 1.1/2 inch	for a perfect filtration of ponds	146927



2	Product name	Product description	Art.nr.
	<b>Hose Connector + screw</b>	for a perfect	
	20 mm / 3/4 inch 2 pieces	filtration of ponds	146875
	<b>Hose Connector + screw</b>	for a perfect	
	25 mm / 3/4 inch 2 pieces	filtration of ponds	146876
	<b>Hose Connector + screw</b>	for a perfect	
	25 mm / 1 inch 2 pieces	filtration of ponds	146877
	<b>Hose Connector + screw</b>	for a perfect	
	32 mm / 1 inch 2 pieces	filtration of ponds	146878
	<b>Hose Connector + screw</b>	for a perfect	
	40 mm / 1 inch 2 pieces	filtration of ponds	146879



3	Product name	Product description	Art.nr.
	<b>Teflon tape</b>		
		for a watertight connection	146916



4	Product name	Product description	Art.nr.
	<b>Repair Set</b>		
	PVC	for pond liner	146937

5	Product name	Product description	Art.nr.
	<b>L-Part + screw</b>	for a perfect	
	20 mm / 3/4 inch 2 pieces	filtration of ponds	146902
	<b>L-Part + screw</b>	for a perfect	
	25 mm / 3/4 inch 2 pieces	filtration of ponds	146903
	<b>L-Part + screw</b>	for a perfect	
	25 mm / 1 inch 2 pieces	filtration of ponds	146880
	<b>L-Part + screw</b>	for a perfect	
	32 mm / 1 inch 2 pieces	filtration of ponds	146881
	<b>L-Part + screw</b>	for a perfect	
	40 mm / 1 inch 2 pieces	filtration of ponds	146882



6	Product name	Product description	Art.nr.
	<b>T-Part + screw</b>	for a perfect	
	1/2 inch	filtration of ponds	146887
	<b>T-Part + screw</b>	for a perfect	
	3/4 inch	filtration of ponds	146888
	<b>T-Part + screw</b>	for a perfect	
	1 inch	filtration of ponds	146889
	<b>T-Part + screw</b>	for a perfect	
	1.1/4 inch	filtration of ponds	146890
	<b>T-Part + screw</b>	for a perfect	
	1.1/2 inch	filtration of ponds	146891



7	Product name	Product description	Art.nr.
	<b>Connection Part + screw</b>	for a perfect	
	1/2 inch	filtration of ponds	146892
	<b>Connection Part + screw</b>	for a perfect	
	3/4 inch	filtration of ponds	146893
	<b>Connection Part + screw</b>	for a perfect	
	1 inch	filtration of ponds	146894
	<b>Connection Part + screw</b>	for a perfect	
	1.1/4 inch	filtration of ponds	146895
	<b>Connection Part + screw</b>	for a perfect	
	1.1/2 inch	filtration of ponds	146896



8	Product name	Product description	Art.nr.
	<b>Valve + screw</b>		
	20 mm / 3/4 inch	for a perfect filtration of ponds	146885
	<b>Valve + screw</b>		
	25 mm / 3/4 inch	for a perfect filtration of ponds	146886





# Connection parts



1

Product name	Product description	Art.nr.
Hose Connector		
20 mm	for a perfect filtration of ponds	146860
Hose Connector		
25 mm	for a perfect filtration of ponds	146861
Hose Connector		
32 mm	for a perfect filtration of ponds	146862
Hose Connector		
40 mm	for a perfect filtration of ponds	146863



2

Product name	Product description	Art.nr.
L-Part		
40 mm	for a perfect filtration of ponds	146868



3

Product name	Product description	Art.nr.
T-Part		
20 mm	for a perfect filtration of ponds	146870
T-Part		
25 mm	for a perfect filtration of ponds	146871
T-Part		
32 mm	for a perfect filtration of ponds	146872
T-Part		
40 mm	for a perfect filtration of ponds	146873



4

Product name	Product description	Art.nr.
Valve		
20 mm	for a perfect filtration of ponds	146883
Valve		
25 mm	for a perfect filtration of ponds	146884

5	Product name		Product description	Art.nr.
	<b>Hose Clamp</b>		<i>hose clamp with winged nut</i>	
	13 mm	2 pieces	<i>for different types of filter hose</i>	146904
	<b>Hose Clamp</b>		<i>hose clamp with winged nut</i>	
	20 mm	2 pieces	<i>for different types of filter hose</i>	146897
	<b>Hose Clamp</b>		<i>hose clamp with winged nut</i>	
	25 mm	2 pieces	<i>for different types of filter hose</i>	146898
	<b>Hose Clamp</b>		<i>hose clamp with winged nut</i>	
	32 mm	2 pieces	<i>for different types of filter hose</i>	146899
	<b>Hose Clamp</b>		<i>hose clamp with winged nut</i>	
	40 mm	2 pieces	<i>for different types of filter hose</i>	146900
	<b>Hose Clamp</b>		<i>hose clamp with winged nut</i>	
	50 mm	2 pieces	<i>for different types of filter hose</i>	146901

Order now: [portal.velda.com](http://portal.velda.com)



# Filter hose



1	Product name	Product description	Art.nr.
	<b>Filter Hose 20 mm</b>	strong black filter hose	
	200 m display (200 m)	in display for self-service	146850
	<b>Filter Hose 25 mm</b>	strong black filter hose	
	150 m display (150 m)	in display for self-service	146851
	<b>Filter Hose 32 mm</b>	strong black filter hose	
	100 m display (100 m)	in display for self-service	146852
	<b>Filter Hose 40 mm</b>	strong black filter hose	
	60 m display (60 m)	in display for self-service	146853
	<b>Filter Hose 50 mm</b>	strong black filter hose	
	50 m display (50 m)	in display for self-service	146854

2	Product name	Product description	Art.nr.
	<b>Filter Hose 20 mm</b>		
	50 m per metre	strong black filter hose	146855
	<b>Filter Hose 25 mm</b>		
	50 m per metre	strong black filter hose	146856
	<b>Filter Hose 32 mm</b>		
	50 m per metre	strong black filter hose	146857
	<b>Filter Hose 40 mm</b>		
	30 m per metre	strong black filter hose	146858
	<b>Filter Hose 50 mm</b>		
	25 m per metre	strong black filter hose	146859



3	Product name	Product description	Art.nr.
	<b>Filter Hose + Clamps 20 mm</b>		
	5 m	black filter hose with 2 wire hose clamps	146950
	<b>Filter Hose + Clamps 25 mm</b>		
	5 m	black filter hose with 2 wire hose clamps	146952
	<b>Filter Hose + Clamps 32 mm</b>		
	5 m	black filter hose with 2 wire hose clamps	146954

4	Product name	Product description	Art.nr.
	<b>Filter Hose extra strong 20 mm</b>		
	50 m per metre	unribbed filter hose	146831
	<b>Filter Hose extra strong 25 mm</b>		
	50 m per metre	unribbed filter hose	146832
	<b>Filter Hose extra strong 32 mm</b>		
	50 m per metre	unribbed filter hose	146833
	<b>Filter Hose extra strong 40 mm</b>		
	25 m per metre	unribbed filter hose	146834
	<b>Filter Hose extra strong 50 mm</b>		
	25 m per metre	unribbed filter hose	146835



# Pond aeration

1	Product name	Product description	Art.nr.
	<b>Ice Preventer &amp; Aerator Disc</b>	de-icer disc and aerator for the pond	
	with pump		145005



2	Product name	Product description	Art.nr.
	<b>V-Tech Air Pump Set AP-10</b>	air pump with 2 Watt	
		air hose and air stone	145050
	<b>V-Tech Air Pump Set AP-30</b>	air pump with 4 Watt	
		air hose and air stone	145051
	<b>V-Tech Air Pump Set AP-40</b>	air pump with 5 Watt	
		air hose and air stone	145052
	<b>V-Tech Air Pump Set AP-50</b>	air pump with 6,5 Watt	
		air hose and air stone	145053





# Pond aeration



1	Product name	Product description	Art.nr.
	<b>Air Stone long</b>	long air stone for a perfect aeration of ponds	145405
	<b>Air Stone long</b>	long air stone for a perfect aeration of ponds	145406



2	Product name	Product description	Art.nr.
	<b>Air Stone round</b>	large round air stone for a perfect aeration of ponds	145400
	<b>Air Stone round</b>	large round air stone for a perfect aeration of ponds	145402
	<b>Air Stone round</b>	large round air stone for a perfect aeration of ponds	145403
	<b>Air Stone round</b>	large round air stone for a perfect aeration of ponds	145404



3	Product name	Product description	Art.nr.
	<b>Air Stone VT 010</b>	extra large air stone for a perfect aeration of ponds	145410
	<b>Air Stone VT 020</b>	large air stone for a perfect aeration of ponds	145415
	<b>Air Stone VT 030</b>	large air stone for a perfect aeration of ponds	145420
	<b>Air Stone VT 110</b>	large air stone for a perfect aeration of ponds	145425
	<b>Air Stone VT 111</b>	large air stone for a perfect aeration of ponds	145430



4	Product name	Product description	Art.nr.
	<b>Air Hose transparent</b>	transparent air hose for a perfect aeration of ponds	146251
	<b>Air Hose transparent</b>	transparent air hose for a perfect aeration of ponds	146258
	<b>Air Hose transparent</b>	transparent air hose for a perfect aeration of ponds	146260



5	Product name	Product description	Art.nr.
	<b>Air Hose black</b>	black air hose for a perfect aeration of ponds	146252
	<b>Air Hose black</b>	black air hose for a perfect aeration of ponds	146259
	<b>Air Hose black</b>	black air hose for a perfect aeration of ponds	146261

6	Product name	Product description	Art.nr.
	<b>Air Divider 6-Way</b>	metal air divider for a perfect aeration of ponds	145447



7	Product name	Product description	Art.nr.
	<b>Check Valve</b>	for a perfect aeration of ponds	145431
	<b>Check Valve</b>	for a perfect aeration of ponds	145432
	<b>Check Valve</b>	for a perfect aeration of ponds	145433



8	Product name	Product description	Art.nr.
	<b>Air T-Part</b>	for a perfect aeration of ponds	145434
	<b>Air T-Part</b>	for a perfect aeration of ponds	145436



9	Product name	Product description	Art.nr.
	<b>Air Connection Part</b>	for a perfect aeration of ponds	145438
	<b>Air Connection Part</b>	for a perfect aeration of ponds	145439
	<b>Air Connection Part</b>	for a perfect aeration of ponds	145441



10	Product name	Product description	Art.nr.
	<b>Air Tap</b>	for a perfect aeration of ponds	145442
	<b>Air Tap</b>	for a perfect aeration of ponds	145443
	<b>Air Tap</b>	for a perfect aeration of ponds	145444



Order now: [portal.velda.com](http://portal.velda.com)



# Pond maintenance



1	Product name	Product description	Art.nr.
	<b>Pond Thermometer</b>	floating thermometer for ponds	148150



2	Product name	Product description	Art.nr.
	<b>Brilliant Pyramid</b>	reflective floater to scare away birds	148206



3	Product name	Product description	Art.nr.
	<b>Quick Feeder</b>	wireless feed dispenser, works on batteries	144500



4	Product name	Product description	Art.nr.
	<b>Pond Gloves</b>	watertight gloves for use in the pond	148060



5	Product name	Product description	Art.nr.
	<b>Power Regulator</b>	max. 800 Watt speed regulating unit for pumps	146210



6	Product name	Product description	Art.nr.
	<b>Pond LED Lights</b>	4.5 Watt 3 pieces atmospheric spot lighting for under water use	146188



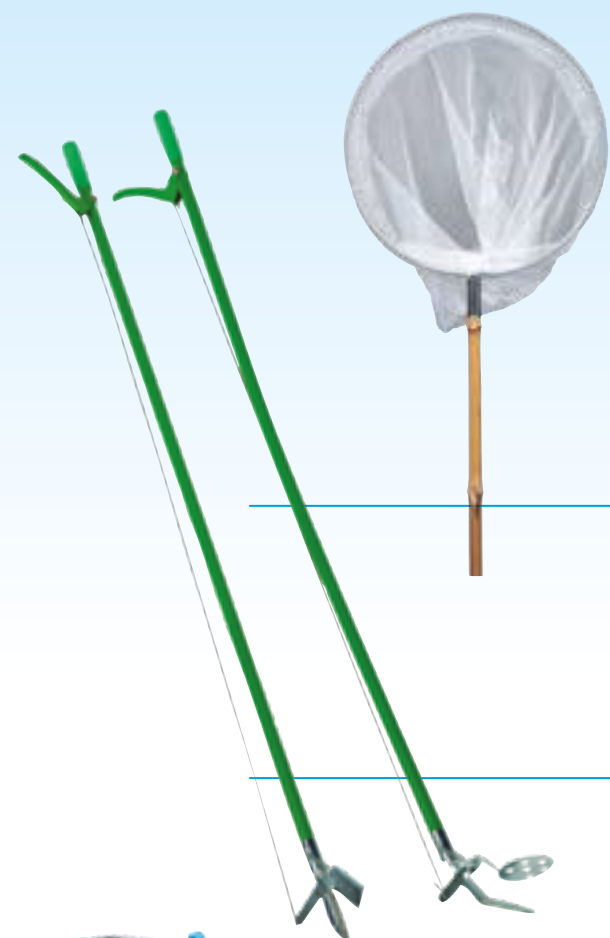
7	Product name	Product description	Art.nr.
	<b>Cascade Part</b>	50 cm waterfall element for extending the cascade	181581
	<b>Cascade Set</b>	40 + 50 cm 1000 l/h 2 waterfall elements with pump and hose	181582



8	Product name	Product description	Art.nr.
	<b>Garden Stream</b>	80 cm watercourse element, mutually connectable	181573
	<b>Garden Stream Set</b>	80 cm 2000 l/h watercourse element with pump, mutually connectable	181575
	<b>Garden Stream</b>	105 cm watercourse element, mutually connectable	181574
	<b>Garden Stream Set</b>	105 cm 2000 l/h watercourse element with pump, mutually connectable	181576

Order now: [portal.velda.com](https://portal.velda.com)





1	Product name	Product description	Art.nr.
	<b>Bamboo scoop net</b>	simple white scoop net with bamboo rod	148035

2	Product name	Product description	Art.nr.
	<b>Pond cutter</b>	for pond maintenance	148050
	<b>Pond pincers</b>	for pond maintenance	148055



3	Product name	Product description	Art.nr.
	<b>Cover Net</b>	cover net with 6 ground pegs 2 x 3 m in useful bag	148040
	<b>Cover Net</b>	cover net with 6 ground pegs 6 x 3 m in useful bag	148041
	<b>Cover Net</b>	cover net with 10 ground pegs 6 x 5 m in useful bag	148042
	<b>Cover Net</b>	cover net with 10 ground pegs 6 x 10 m in useful bag	148043
	<b>Cover Net</b>	36 x 2x3 m + 12 x 6x3 m display (60) + 8 x 6x5 m + 4 x 6x10 m	148044

4	Product name	Product description	Art.nr.
	<b>Pond Net + telesc. rod</b>	multi functional scoop net with telescopic rod	148005
	<b>Pond Net + telesc. rod</b>	multi functional scoop net with telescopic rod	148010
	<b>Pond Net + telesc. rod</b>	multi functional scoop net with telescopic rod	148015
	<b>Pond Net Daphnia + telesc. rod</b>	finely-woven scoop net with telescopic rod	148016
	<b>Pond Net</b>	9 x 25 cm + 9 x 30 cm + display (36) 9 x 35 cm + 9 x Daphnia	148020



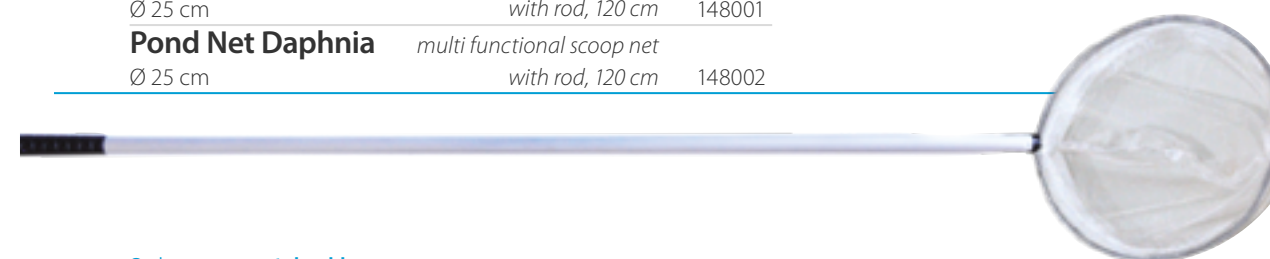
# Pond nets

5	Product name	Product description	Art.nr.
	<b>Fish Net S</b>	large scoop net with telescopic rod	148025
	<b>Fish Net M</b>	large scoop net with telescopic rod	148026
	<b>Fish Net L</b>	large scoop net with telescopic rod	148027

6	Product name	Product description	Art.nr.
	<b>Algae Brush</b>	brush with telescopic rod for the removal of fibrous algae	148018
	<b>3-in-1 Pond Set</b>	coarse scoop net 40 cm, fine scoop net 40 cm and fibrous algae brush	148017



7	Product name	Product description	Art.nr.
	<b>Pond Net square</b>	multi functional scoop net with rod, 120 cm	148000
	<b>Pond Net round</b>	multi functional scoop net with rod, 120 cm	148001
	<b>Pond Net Daphnia</b>	multi functional scoop net with rod, 120 cm	148002



Order now: [portal.velda.com](http://portal.velda.com)



# Specifications VT

Specifications VT per product	article number	power	capacity/ output	delivery head	max. pump	max. UV-C	cable	hose swivels Ø	content	dimensions in cm, hxxwxd
Pressure Filter 6000	146051	-	6000 liter	-	3000 l/h	9 W	4 m	15/20/25 mm	15 liter	38 x 32 x 32
Pressure Filter 10000	146052	-	10.000 liter	-	5000 l/h	18 W	4 m	25/32/40 mm	24 liter	46 x 55 x 40
Pressure Filter 15000	146053	-	15.000 liter	-	8000 l/h	24 W	4 m	25/32/40 mm	36 liter	56 x 55 x 40
Ready Filter Set 6000	146033	-	6000 liter	-	3000 l/h	9 W	4 m	20 + 50 mm	12 liter	32 x 36 x 28
Ready Filter Set 9000	146034	-	9000 liter	-	3000 l/h	11 W	4 m	20 + 50 mm	18 liter	42 x 36 x 28
Box Filter 4000	146036	-	4000 liter	-	3000 l/h	-	-	13-25/32 mm	15 liter	28 x 40 x 30
Box Filter 7000	146038	-	7000 liter	-	3000 l/h	-	-	13-25/32 mm	24 liter	45 x 40 x 30
Econo Pond Pump 2000	146163	26 W	2000 l/h	max.1,95 m	-	-	10 m	14/20/25 mm	-	15 x 30 x 30
Econo Pond Pump 4000	146164	68 W	4000 l/h	max. 3,0 m	-	-	10 m	14/20/25 mm	-	15 x 30 x 30
Econo Pond Pump 6000	146166	130 W	6000 l/h	max. 4,1 m	-	-	10 m	25/32/40 mm	-	15 x 30 x 30
Econo Pond Pump 8000	146168	180 W	8000 l/h	max. 5,0 m	-	-	10 m	25/32/40 mm	-	15 x 30 x 30
Super Fountain Pump 400	146158	10 W	480 l/h	max. 1,0 m	-	-	10 m	12/20 mm	-	50 x 12 x 8
Super Fountain Pump 800	146159	11 W	800 l/h	max. 1,2 m	-	-	10 m	20 + 20 mm	-	46 x 13 x 6
Super Fountain Pump 1000	146160	12 W	1050 l/h	max. 1,5 m	-	-	10 m	20 + 20 mm	-	66 x 14 x 8
Super Fountain Pump 2000	146161	25 W	1950 l/h	max. 2,0 m	-	-	10 m	20 + 20 mm	-	68 x 16 x 9
Super Fountain Pump 3000	146162	45 W	2900 l/h	max. 2,5 m	-	-	10 m	20 + 25 mm	-	68 x 16 x 9
Super Fountain Pump 4000	146167	70 W	4000 l/h	max. 3,0 m	-	-	10 m	20 + 25 mm	-	74 x 22 x 10
Air Pump Set AP-10	145050	2 W	1,3 l/min	-	-	-	1,4 m	-	-	5 x 5 x 10
Air Pump Set AP-30	145051	4 W	3,5 l/min	-	-	-	1,4 m	-	-	6,5 x 7,5 x 15
Air Pump Set AP-40	145052	5 W	4,5 l/min	-	-	-	1,4 m	-	-	7,5 x 8,5 x 17
Air Pump Set AP-50	145053	6,5 W	5,5 l/min	-	-	-	1,4 m	-	-	7,5 x 9,5 x 19

# Specifications Velda

Specifications Velda per product	article number	power	capacity/ output	delivery head	max. pump	max. UV-C	cable	hose swivels Ø	content	dimensions in cm, hxxwxd
Clear Control 25	126310	-	10.000 liter	-	5000 l/h	2 x 9 W	4 m	32/40 mm	25 liter	60 x 45 x 45
Clear Control 50	126330	-	20.000 liter	-	8000 l/h	2 x 18 W	4 m	32/40 mm	50 liter	85 x 45 x 45
Clear Control 75	126371	-	30.000 liter	-	12.500 l/h	2 x 36 W	4 m	32/40 mm	75 liter	95 x 45 x 45
Clear Control 100	126373	-	60.000 liter	-	20.000 l/h	2 x 55 W	4 m	32/40/50 mm	100 liter	95 x 60 x 60
Cross-Flow Biofill	126400	-	10.000 liter	-	5000 l/h	18 W	4 m	20-40/50 mm	75 liter	40 x 60 x 40
Giant Biofill XL	126405	-	60.000 liter	-	15.000 l/h	2 x 36 W	4 m	32/40/50 mm	210 liter	60 x 80 x 60
Green Line 5000	126595	40 W	5000 l/h	max. 3,5 m	-	-	10 m	25/32/40 mm	-	50 x 15 x 35
Green Line 8000	126596	70 W	8000 l/h	max. 4,5 m	-	-	10 m	25/32/40 mm	-	50 x 15 x 35
Green Line 12500	126597	110 W	12000 l/h	max. 5,5 m	-	-	10 m	32/40/50 mm	-	50 x 15 x 35
Green Line 15000	126598	135 W	14500 l/h	max. 6,0 m	-	-	10 m	32/40/50 mm	-	50 x 15 x 35
Green Line 20000	126599	200 W	16000 l/h	max. 7,0 m	-	-	10 m	32/40/50 mm	-	50 x 15 x 35
Silenta Outdoor 1200	125080	15 W	20 l/min	-	-	-	4 m	-	-	16 x 12 x 16
Silenta Outdoor 1800	125085	25 W	30 l/min	-	-	-	4 m	-	-	16 x 12 x 16
Silenta Outdoor 3600	125090	35 W	60 l/min	-	-	-	4 m	-	-	20 x 16 x 20
Silenta Outdoor 4800	125098	65 W	80 l/min	-	-	-	4 m	-	-	24 x 20 x 24
Silenta Outdoor 6000	125099	80 W	100 l/min	-	-	-	4 m	-	-	24 x 20 x 24





velda

vincia

**SANIKOI**



T +31 (0)53 432 43 20

[info@velda.com](mailto:info@velda.com)

[www.velda.com](http://www.velda.com)